



# FOREST TRAVEL HOLIDAYS LTD

## Great British Coach Holidays 2023



Small family coach company with family values



# HOLIDAY INFORMATION

## SUITCASE REQUIREMENTS

There will be a limit restriction to one suitcase per person.  
Maximum size: (H-76 x W-55 x D-31cm)

## SMALL SCOOTERS/WHEELCHAIRS/WALKING FRAMES

Any of the above items must be declared when booking your trip to a Forest Travel member of staff. We will endeavour to allow such items to travel with you but reserve the right to refuse if limited space is available. A member of staff will telephone you prior to your travel.

**BOOKINGS** - A non refundable deposit of £25 per person will secure your reservation. The balance is due at least 28 days prior to departure. We reserve the right to cancel any booking and retain the deposit if the full balance is not received by the due date. Single supplements are charged at the discretion of the hotel. Any special requests will be noted at the time of booking, and will be passed on to the hotel. Although we cannot guarantee to fulfil every request we will do our best to accommodate them.

Seat numbers will be issued with bookings on a first come first serve basis. It may be necessary to adjust seating arrangements but this will be avoided as much as possible.

**Cancellations** - All deposits are non refundable. Cancellations must be confirmed in writing. If a cancellation occurs within 28 days of departure the following charges apply:

Prior to 28 days	deposit only
21 - 28 days	25% of full cost of tour
14 - 21 days	50% of full cost of tour
7 - 14 days	100% of holiday cost

**Inclusive Charges** - The cost of the tour includes local pick up and departures, a reserved coach seat and hotel accommodation. Forest Travel Holidays can offer local pick-ups, please contact the office for further information.

5 day tours include 2 excursions

8 day tours include 3 excursions.

Prices include ferries where applicable.

All prices are inclusive of VAT at the current rate of 20%, any variation by the Government to this rate may dictate a change to the published price. All prices are correct at the time of going to print as of October 2022.

**Fuel Costs** - Due to the current climate, prices may increase due to fuel costs which will be totally out of our control. We will however, endeavour to keep all our customers informed and up to date on this situation.

**Complaints** - Should you have a complaint please inform your driver as soon as possible, he will do his best to solve any issues within his control. If the matter cannot be rectified complaints should be made in writing within seven days of the return of your tour to the head office.

**Disclaimer** - Forest Travel Holidays reserves the right to cancel a tour at any time, if this is the case an alternative tour will be offered or a full refund given.

We no longer sell travel insurance direct, but you may find the enclosed leaflet from Towergate Travel (Travel Insurance Specialists in the coaching industry) of interest, as it will provide information on how to purchase their Travel Insurance.





## WELCOME

Welcome to our new holiday brochure for 2023 full of new destinations and some of the old favourites too. We have worked tirelessly to keep all our prices competitive but due to the current economic situation with the general cost of living and fuel price increase, we have had to come to the difficult decision regarding the pick up service in the North. Transport will still be supplied as normal but unfortunately this will now incur a charge to enable the company to cover costs - we hope this does not deter you from travelling with us in the future.

I personally would like to thank each and every one of our customers for their continued support and for choosing Forest Travel Holidays. Without your support we would not have been able to grow into the family business we are today, for this we are truly thankful.

I hope you enjoy all of the holidays we have to offer and hope to see you soon. Happy Holidays!

Barrie & The Team

## Easy Steps to book your holiday

1

Choose your holiday and then telephone the office to speak to a member of staff who will guide you through your booking. A £25 deposit will be required within 4 weeks of your booking. Please note we have the right to cancel if no deposit is paid.

2

The full balance is due 4 weeks prior to travel.

Please note: If sharing a twin room and 1 person within that party cancels, there will be a single room supplement incurred for the travelling passenger.

3

The week before you travel you will be telephoned with confirmation of your pickup time and place.

## Holiday Dates

			Page
January			
27th-31st	Fri-Tues	Torquay	1
20th-23rd	Fri-Mon	Skegness	5
February			
10th-13th	Fri-Mon	Babbacombe	2
27th-3rd	Mon-Fri	Paignton	2
27th-3rd	Mon-Fri	Skegness	5
27th-3rd	Mon-Fri	WSM	21
March			
2nd-6th	Thurs-Mon	Tenby	17
6th-10th	Mon-Fri	Warners	12
13th-17th	Mon-Fri	Mystery Tour	17
13th-17th	Mon-Fri	Newcastle	19
20th-24th	Mon-Fri	Whitby	4
20th-24th	Mon-Fri	St Agnes	14
26th-30th	Sun-Thurs	Chatham	5
April			
2nd-6th	Sun-Thurs	Sidmouth	3
3rd-7th	Mon-Fri	Bournemouth	10
10th-14th	Mon-Fri	Morecambe	8
10th-14th	Mon-Fri	Llandudno	16
17th-21st	Mon-Fri	Warners	11
17th-21st	Mon-Fri	WSM	21
24th-28th	Mon-Fri	Scarborough	4
24th-28th	Mon-Fri	Weymouth	15
May			
1st-5th	Mon-Fri	Torquay	1
1st-5th	Mon-Fri	Isle of Wight	6
8th-12th	Mon-Fri	Looe	13
14th-19th	Sun-Fri	Eastbourne	3
14th-18th	Sun-Thurs	Llandrindod Wells	16
22nd-26th	Mon-Fri	Exmouth	9
June			
4th-9th	Sun-Fri	Scotland	18
5th-9th	Mon-Fri	Paignton	2
12th-16th	Mon-Fri	Babbacombe	2
12th-16th	Mon-Fri	Llandudno	16
19th-23rd	Mon-Fri	Mystery Tour	17
July			
2nd-8th	Sun-Sat	Weymouth	15
3rd-7th	Mon-Fri	Skegness	5
10th-14th	Mon-Fri	Exmouth	9
10th-14th	Mon-Fri	Ross-on-Wye	19
16th-21st	Sun-Fri	Newquay	14
17th-22nd	Mon-Sat	Isle of Wight	6
24th-28th	Mon-Fri	Torquay	1
24th-28th	Mon-Fri	Warners	11
31st-4th	Mon-Fri	Lytham StAnnes	8
31st-4th	Mon-Fri	Land of Constable	15
August			
7th-11th	Mon-Fri	Babbacombe	2
7th-13th	Mon-Sun	Eastbourne	3
13th-19th	Sun-Sat	Falmouth	13
21st-25th	Mon-Fri	Torquay	1
21st-25th	Mon-Fri	Blackpool	7
27th-1st	Sun-Fri	Isle of Wight	6
28th-1st	Mon-Fri	Bournemouth	10
September			
3rd-9th	Sun-Sat	Weymouth	15
4th-8th	Mon-Fri	WSM	21
10th-14th	Sun-Thurs	Llandrindod Wells	16
11th-15th	Mon-Fri	Warners	12
18th-22nd	Mon-Fri	Isle of Wight	6
25th-29th	Mon-Fri	Skegness	5
25th-29th	Mon-Fri	Looe	13
October			
2nd-6th	Mon-Fri	Blackpool	7
2nd-6th	Mon-Fri	Bournemouth	10
8th-13th	Sun-Fri	St Agnes	14
9th-13th	Mon-Fri	Morecambe	8
16th-20th	Mon-Fri	Babbacombe	2
16th-20th	Mon-Fri	Windermere	20
23rd-27th	Mon-Fri	Fleetwood	7
23rd-27th	Mon-Fri	Mystery Tour	17
30th-3rd	Mon-Fri	Warners	12
30th-3rd	Mon-Fri	Newcastle	19
November			
6th-10th	Mon-Fri	WSM	21
6th-10th	Mon-Fri	Weymouth	15
13th-17th	Mon-Fri	Eastbourne	3
13th-17th	Mon-Fri	Llandudno	16
20th-24th	Mon-Fri	Paignton	2
20th-24th	Mon-Fri	Isle of Wight	6
December			
4th-8th	Mon-Fri	Torquay	1
4th-8th	Mon-Fri	Skegness	5
23rd-27th	Sun-Wed	Christmas Tour	23
30th-3rd	Sat-Wed	New Year Tour	24





Torquay is South Devon's most stylish resort and has a Mediterranean atmosphere with a palm tree lined promenade. The harbour holds some spectacular boats which you will see why the area gets its reputation as a millionaires paradise. There is a bustling town for all those who like to do a bit of shopping with galleries, cafes and restaurants.



## Nethway Hotel [www.nethwayhotel.co.uk](http://www.nethwayhotel.co.uk)

Given the close proximity of popular landmarks, such as South West Coast Path Walk - Meadfoot & London Bridge (0.2 mi) and Torquay Railway Station (0.2 mi), guests of Nethway Hotel can easily experience some of Torquay's most well known attractions.

### What's Included:

- Return Coach Travel • Traditional Cooked Breakfast
- Three Course Evening Meal
- Evening Entertainment - see hotel for further information

### Tour Includes:

2 Mystery Tours • Trago Mills (weekend tour only)

### Facilities Include

Ensuite TV Bar/Lounge !Free Wi-Fi  
"Outdoor Swimming Pool #Tea/coffee making facilities  
\$There is no lift access

Departure	Dates	Price
Fri - Tues	27th - 31st January	£189
Mon - Fri	24th - 28th July	£300

## Riviera Hotel [www.rivieratorquay.co.uk](http://www.rivieratorquay.co.uk)

A warm welcome awaits you at the Riviera Hotel in the heart of Torquay on the English Riviera. The hotel is just a stones throw away from Torquay's award winning beaches, sparkling blue sea and all that the English Riviera and surrounding area has to offer. **New for 2023: Forest Travel have now upgraded all rooms to include a walk-in shower as standard.**



### What's Included:

- Return Coach Travel • Traditional Cooked Breakfast
- Three Course Evening Meal
- Evening Entertainment - see hotel for further information

### Tour Includes:

Dawlish/Teignmouth • Dartmouth/Buckfast Abbey

### Facilities Include

Ensuite (Walk In Shower)  
TV

Bar/Lounge! Free Wi-Fi

#Tea/coffee making facilities

\$Lift access to most floors

"Heated Indoor Swimming Pool

**Please note: There is a single room supplement at this hotel.**

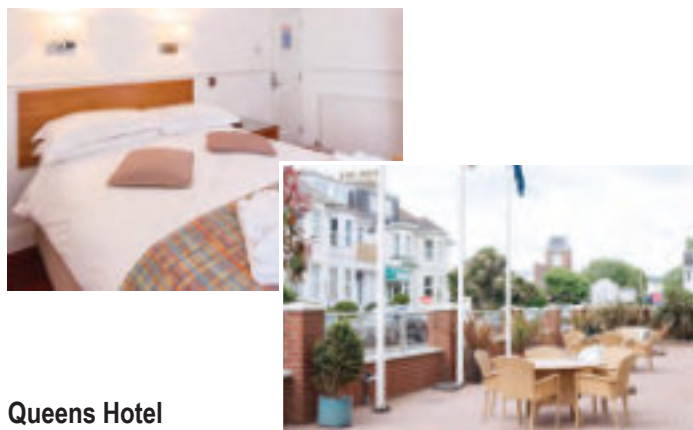


Departure	Dates	Price
Mon - Fri	1st- 5th May	£289
Mon - Fri	21st- 25th August	£325
Mon - Fri	4th - 8th December Turkey & Tinsel	£245

## Paignton



Nestling between its two neighbours, Torquay and Brixham, Paignton is a pleasant family resort noted for its mild climate. The resort which is on the English Riviera is a popular tourist town that is popular with both young and old alike. Paignton is home to an array of fantastic beaches where you can dip your toes in the award winning safe clean Blue Flag beaches.



### Queens Hotel

[www.queenspaignton.com](http://www.queenspaignton.com)

The Queens Hotel is a family run establishment which is on a flat level position just 200 yards from Paignton town centre and seafront. The friendly staff are on hand to take care of your every need and want your stay to be a relaxing, refreshing and rejuvenating one.

#### What's Included:

- Return Coach Travel • Traditional Cooked Breakfast
- Three Course Evening Meal
- Evening Entertainment - see hotel for further information

#### Tour Includes:

Plymouth • Totnes/Brixham

#### Facilities Include

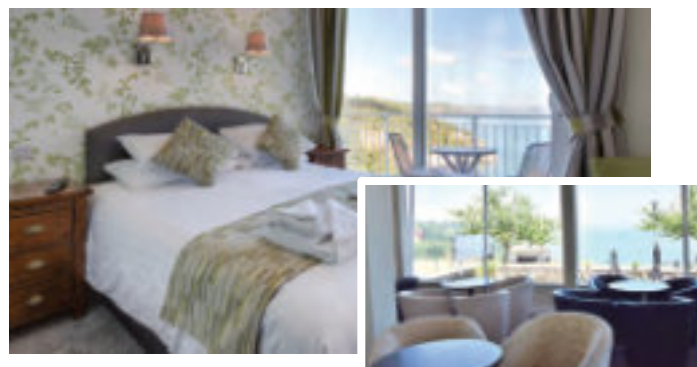
Ensuite TV Bar/Lounge !FreeWi-Fi  
"Lift accessto mostfloors #Tea/coffee makingfacilities  
\$Heated SwimmingPool

Departure	Dates	Price
Mon - Fri	27th February - 3rd March	£280
Mon - Fri	5th - 9th June	£345
Mon - Fri	20th - 24th November Turkey& Tinsel	£308

## Babbacombe



Babbacombe is a laid back neighbour to the ever buzzing Torquay and part of the beautiful English Riviera. Picturesque views and rich heritage along with the warm climate, this classy Victoria holiday destination will help you wind down and relax. There is a wide choice of good local food and drink places all serving excellent dishes whilst incorporating the views of Babbacombe beach.



### The Babbacombe Hotel [www.thebabbacombehotel.co.uk](http://www.thebabbacombehotel.co.uk)

Positioned on the flat Babbacombe Downs overlooking the sea with stunning views from the bar, restaurant and function room. You'll find that The Babbacombe Hotel makes for the perfect setting during your stay on the English Riviera.

#### What's Included:

- Return Coach Travel • Traditional Cooked Breakfast
- Three Course Evening Meal
- Evening Entertainment - see hotel for further information

#### Tour Includes:

Brixham/Paignton • Newton Abbott Market / Teignmouth  
February Tour: Paignton/Brixham

#### Facilities Include

Ensuite TV Bar/Lounge !FreeWi-Fi  
#Tea/coffee makingfacilities "Lift accessto mostfloors

Departure	Dates	Price
Fri - Mon	10th - 13th February Tribute Weekend	£189
Mon - Fri	12th - 16th June	£328
Mon - Fri	7th - 11th August	£349
Mon - Fri	16th - 20th October	£345

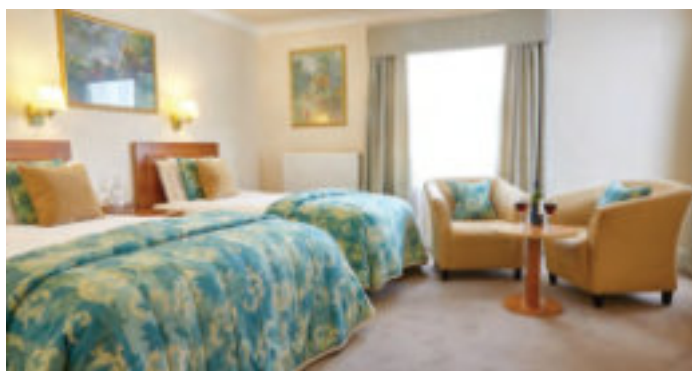


## Sidmouth

NEW  
HOLIDAY



Sidmouth is a beautiful place that is easy to find and hard to leave. Hidden in plain view along the beautiful Jurassic Coast, a UNESCO World Heritage Site, Sidmouth is a seaside town like no other. Sitting along an impressive coastline and surrounded by spectacular countryside and Blue Flag award winning beaches, Sidmouth allows you to enjoy the best of both worlds, with everything you can expect from a beach holiday as well as having a rural feel and a real community atmosphere.



### Royal York & Faulkner Hotel [www.royalyorkhotel.co.uk](http://www.royalyorkhotel.co.uk)

Just a stone's throw from the beach and the picturesque town centre, the seafront hotel is the perfect choice for a relaxing break in the unspoilt seaside resort of Sidmouth. During your stay you may choose to visit the unique little shops in the town or take a stroll along the Esplanade. If you are feeling energetic, take a walk to the top of Salcombe or Peak Hills to get a fantastic view of the bay and the town.

#### What's Included:

- Return Coach Travel • Traditional Cooked Breakfast
- Three Course Evening Meal
- Evening Entertainment - see hotel for further information

#### Tour Includes:

Exmouth/Budleigh  
Bicton Park/Salterton Botanical Gardens (Admission included)

#### Facilities Include

Ensuite TV Bar/Lounge !Free Wi-Fi  
"Tea/coffee making facilities #Lift access to most floors

Departure	Dates	Price
Sun - Thurs	2nd - 6th April	£385

## Eastbourne



Eastbourne is set in the heart of the South Coast which is sheltered by Beachy Head and the South Downs and boasts of being one of the top sunshine resorts in the UK. The five mile promenade along with the famous Carpet Gardens line the seafront of Eastbourne. With a beautiful coastline and an array of lovely shops, Eastbourne will suit all ages.



### Cumberland Hotel [www.hotelcumberland.co.uk](http://www.hotelcumberland.co.uk)

One of Eastbourne's premier hotels, commanding a wonderful position on the seafront overlooking the famous flower-decked promenade, the bandstand and the beautiful Victorian Pier. The Lounges and Wordsworth Restaurant have amazing sea views and have an ambiance of classical elegance.

#### What's Included:

- Return Coach Travel • Traditional Cooked Breakfast
- Three Course Evening Meal
- Evening Entertainment - see hotel for further information

#### Tour Includes:

Battle/Bexhill • Beachy Head/Brighton • Mystery Tour

#### Facilities Include

Ensuite TV Bar/Lounge !Free Wi-Fi  
#Lift access to most floors "Tea/coffee making facilities

Departure	Dates	Price
Sun - Fri	14th - 19th May	£340
Mon - Sun	7th - 13th August	£399
Mon - Fri	13th - 17th November Turkey & Tinsel	£290

# Scarborough



Set in Yorkshire's glorious coastline, Scarborough is a popular and colourful resort. Set on the edge of the rugged North Yorkshire Moors the area boasts a beautiful harbour, Sealife Marine Sanctuary, sandy beaches, North Bay railway, Scarborough Castle, Flamingo Land and much more. There are plenty of shops and restaurants all within close proximity of the beach. A lovely destination to suit all ages.



## The Cumberland Hotel

[www.cumberland-hotel.scarborough.top-hotels-uk.com](http://www.cumberland-hotel.scarborough.top-hotels-uk.com)

Extremely well situated on the South Cliff a few minutes walk from the Spa complex, beach and town centre. The hotel has some splendid views of the resort and includes all the amenities to make sure you are comfortable during your visit.

### What's Included:

- Return Coach Travel • Traditional Cooked Breakfast
- Three Course Evening Meal
- Evening Entertainment - see hotel for further information

### Tour Includes:

Eden Camp (Admission Inc.) • Whitby

### Facilities Include

Ensuite TV Bar/Lounge !FreeWi-Fi  
"Tea/coffee making facilities  
#Lift access to most floors (some steps to rooms)

**Please note: There is a single room supplement at this hotel.**

Departure	Dates	Price
Mon - Fri	24th - 28th April	£265

# Whitby

**NEW  
HOLIDAY**



Whitby is set along the stunning Yorkshire coast with easy access to the rolling North York Moors which offers up a delectable selection of historic villages and picturesque scenery. Explore the monastic ruins of Whitby Abbey which sit on the East Cliff headland or enjoy a steam train journey through the North York Moors National Park. Or visit the Captain Cook memorial museum which is in the house where Cook once lived or spend a day on West Cliff beach surrounded by vibrant beach huts.



## Royal Hotel [www.bespokehotels.com/royal-whitby](http://www.bespokehotels.com/royal-whitby)

If you're looking for hotels in Whitby, the Royal Whitby is one of the jewels in the Coast & Country Hotel Collection crown. From a stunning cliff top location, our guests enjoy the most amazing views on all sides – of the beaches, harbour, old town, abbey ruins and headland.

### What's Included:

- Return Coach Travel • Traditional Cooked Breakfast
- Three Course Evening Meal

### Tour Includes:

Goathland/Pickering/Thornton-le-Dale • Scarborough

### Facilities Include

Ensuite TV Bar/Lounge !FreeWi-Fi  
"Tea/coffee making facilities #Lift access to most floors

**Please note: There is a single room supplement at this hotel.**

Departure	Dates	Price
Mon - Fri	20th - 24th March	£249



# Skegness



Skegness is known as the fun coast and is one of the main resorts in the area, therefore making it a very popular resort for over 100 years. Skegness has never lost its charm over the years and provides a fun filled holiday to accommodate all ages. The beaches still have the traditional donkey rides and still retains it's award for the clean sands. There is something for everyone all within walking distance and close proximity to the centre of Skegness.



**The Royal Hotel** [www.theroyalhotelskegness.co.uk](http://www.theroyalhotelskegness.co.uk)

The Royal Hotel is an elegant 19th century hotel and is centrally located within easy walking distance of all the leading attractions Skegness has to offer.

## What's Included:

- Return Coach Travel • Traditional Cooked Breakfast
- Three Course Evening Meal
- Evening Entertainment - see hotel for further information

## Tour Includes:

Louth/Mablethorpe • Boston

## Facilities Include

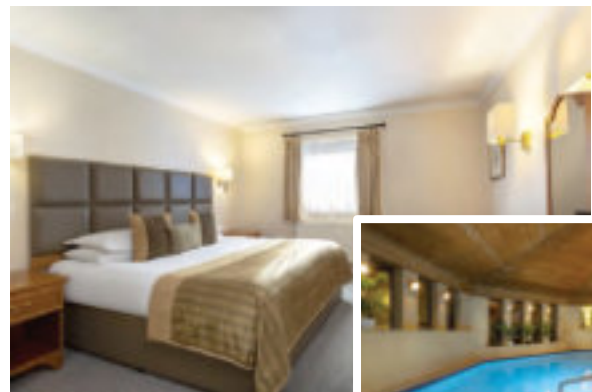
Ensuite TV Bar/Lounge !FreeWi-Fi  
"Lift accessto mostfloors #Tea/coffee makingfacilities

Departure	Dates	Price
Fri- Mon	20th - 23rd January 50's/60's weekend	£185
Mon - Fri	27th February- 3rd March	£220
Mon - Fri	3rd - 7th July	£288
Mon - Fri	25th - 29th September	£288
Mon - Fri	4th - 8th December Turkey& Tinsel	£285

# Chatham



Chatham is crammed with must-see places to visit and things to do. Rich in history stretching back more than 400 years, and being one of the most important naval dockyards in the country, which was once the birthplace of many famous ships including Nelson's flagship HMS Victory. Chatham has one of the largest town centre's for shopping in Medway including many well known high street shops and cafes all in a fully pedestrianised area.



**Bridgewood Manor Hotel**

[www.bridgewoodmanorhotel.com](http://www.bridgewoodmanorhotel.com)

A charming four-star hotel in Chatham, Bridgewood Manor is the perfect destination for visitors who wish to explore the scenic surroundings. With excellent amenities and a convenient location that is in close proximity to Maidstone and not too far away from Leeds Castle, guests will find it easy to discover all this beautiful county has to offer.

## What's Included:

- Return Coach Travel • Traditional Cooked Breakfast
- Three Course Evening Meal

## Tour Includes:

Canterbury • Hearn Bay/Whitstable  
Chatham Historical Dockyard (Admission included)

## Facilities Include

Ensuite TV Bar/Lounge !FreeWi-Fi  
"Lift accessto mostfloors #Tea/coffee makingfacilities  
\$Heated IndoorSwimmingPool %Spa

Departure	Dates	Price
Sun- Thurs	26th - 30th March	£310



# Isle of Wight

NEW  
HOTEL



The island continues to be as popular as ever with something to suit all ages. The Isle of Wight offers all visitors a delightful combination of coastal and country scenery with old world villages and the more up to date seaside resorts. Shanklin is the most charming of traditional seaside resorts with beautiful beaches set within a backdrop of sandstone cliffs.



## Holliers Hotel [www.holliershotel.com](http://www.holliershotel.com)

The Holliers Hotel is situated in the heart of Shanklin Old Village. The Holliers offers a great ambience with entertainment most nights including local musicians and entertainers.

### What's Included:

- Return Coach Travel • Traditional Cooked Breakfast
- Three Course Evening Meal
- Evening Entertainment - see hotel for further information

### Tour Includes:

Alum Bay/Yarmouth • Eastwight/Ryde/Newport

### Facilities Include

Ensuite TV Bar/Lounge !FreeWi-Fi  
"Tea/coffee making facilities #There is no lift access

**Please note: There is a single room supplement at this hotel.**

Departure	Dates	Price
Mon - Fri	1st- 5th May	£235
Sun - Fri	27th August - 1st September	£305
Mon - Fri	20th - 24th November	£215



## Channel View Hotel

[www.channelviewhotel.co.uk](http://www.channelviewhotel.co.uk)

Boasting the most amazing and picturesque views of the English Channel, The Channel View Hotel is sat at a top the cliffs of Shanklin Bay in an idyllic location. The Hotel is within close proximity of the beaches, which stretch from Luccombe Bay all the way to Yaverland. Perfect for a day of coastal relaxation.

### What's Included:

- Return Coach Travel • Traditional Cooked Breakfast
- Three Course Evening Meal
- Evening Entertainment - see hotel for further information

### Tour Includes:

Mystery Tour  
Osbourne House / Whippingham Church (Admission not included)

### Facilities Include

Ensuite TV Bar/Lounge  
!FreeWi-Fi

"Tea/coffee making facilities

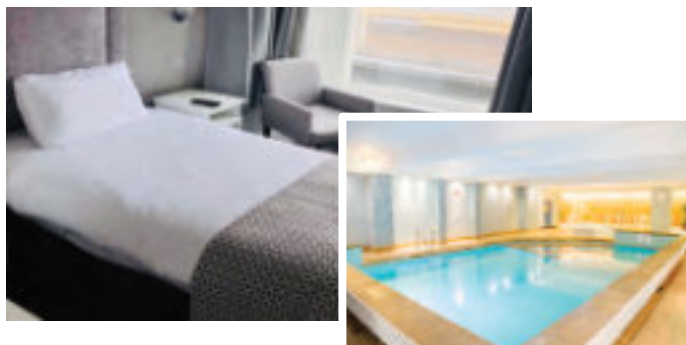
\$Heated Indoor Swimming Pool & Spa

Departure	Dates	Price
Mon - Sat	17th- 22nd July	£460
Mon - Fri	18th- 22nd September	£380

# Blackpool



Blackpool is one of Britain's favourite seaside resorts of the North West! The famous Blackpool tower will give you a trip down memory lane whilst exploring the dizzy heights from the floor to ceiling glass observation windows. From 380 feet above the promenade to down to the depths of the Tower Dungeon where performers will relive their own horrible histories of death and torture. Blackpool zoo, donkey rides, Pleasure Beach and Sandcastle Waterpark are among many attractions this resort has to offer so you will never be short of things to keep you entertained!



## Park House Hotel [www.parkhousehotelblackpool.com](http://www.parkhousehotelblackpool.com)

A family run hotel positioned in the prestigious Blackpool North Promenade and within walking distance to all the major attractions. The hotel has a superb entertainment's package most nights or alternatively if you prefer something a little quieter, there is a sun lounge which has stunning views overlooking the Irish Sea.

### What's Included:

- Return Coach Travel • Traditional Cooked Breakfast
- Three Course Evening Meal
- Evening Entertainment - see hotel for further information

### Tour Includes:

Southport • Fleetwood Market/Cleveleys

October Tour - includes Blackpool Illuminations

### Facilities Include

Ensuite TV Bar/Lounge !FreeWi-Fi  
"Tea/coffee making facilities #Lift accessto mostfloors

Departure	Dates	Price
Mon - Fri	21st - 25th August	£340
Mon - Fri	2nd - 6th October	£340

# Fleetwood



Fleetwood is a smaller destination to that of Blackpool but is still a beautiful upcoming tourist destination that is worth a visit. A traditional Victorian seaside resort which is bounded by the sea on three sides with good sandy beaches and also boasts a stunning promenade. The area has everything to offer as any other destination albeit at a quieter pace but include a beautiful harbour, traditional shops and the famous Fleetwood Market with its 200 stalls.



## North Euston Hotel [www.northeustonhotel.com](http://www.northeustonhotel.com)

The imposing frontage dominates the Fleetwood waterfront and enjoys spectacular panoramic views over the Wyre estuary to Morecambe Bay and the Lake District. The hotel is within short walking distance of the local shopping centre, just minutes from Marine Hall, Fleetwood Market and Fleetwood Freeport Shopping Outlet.

### What's Included:

- Return Coach Travel • Traditional Cooked Breakfast
- Three Course Evening Meal
- Evening Entertainment - see hotel for further information

### Tour Includes:

Lancaster • Lytham St Annes • Blackpool Illuminations

### Facilities Include

Ensuite TV Bar/Lounge !FreeWi-Fi  
#Lift accessto mostfloors "Tea/coffee making facilities

Departure	Dates	Price
Mon - Fri	23rd - 27th October	£349



## Morecambe



Set on Lancashire's West Coast, the pleasant resort of Morecambe is ideally situated for a relaxing break and for exploring the Lake District. Morecambe's location is outstanding with stunning views across the bay. You will find five miles of level promenade with a vibrant modern resort but with all the traditional hospitality that you thought had disappeared forever.



### Auckland Hotel [www.aucklandhotel.co.uk](http://www.aucklandhotel.co.uk)

The Auckland Hotel have been a family run hotel for nearly 40 years and understand the needs of holiday makers in Morecambe. From great food to a good night's sleep they strive to make sure your stay as perfect as possible. Located in the heart of Morecambe and close to shops and restaurants the Auckland Hotel is the place to stay.

#### What's Included:

- Return Coach Travel • Traditional Cooked Breakfast
- Three Course Evening Meal
- Evening Entertainment - see hotel for further information

#### Tour Includes:

Bowness on Windermere • Lancaster/Kirkby Lonsdale

#### Facilities Include

Ensuite TV Bar/Lounge !FreeWi-Fi  
"Tea/coffee making facilities #Lift accessto mostfloors

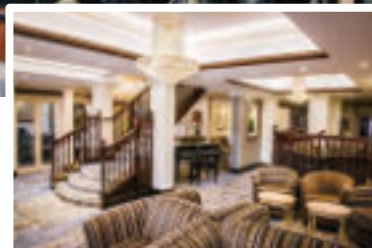
Departure	Dates	Price
Mon - Fri	10th - 14th April	£285
Mon - Fri	9th - 13th October	£309

## Lytham St Annes

NEW  
HOTEL



This is a quieter resort that neighbours Blackpool but is more less commercialised. The resort has a Victorian Pier and offers peace and quiet with tranquil gardens, band stand and promenade.



### Clifton Park Hotel [www.cliftonpark.co.uk](http://www.cliftonpark.co.uk)

Clifton Park Hotel is renowned for its timeless elegance, superior quality and exemplary service. Centrally located in the stylish seaside town of St Annes-on-Sea, only 1 mile from leafy Lytham and 3 miles from bustling Blackpool.

#### What's Included:

- Return Coach Travel • Traditional Cooked Breakfast
- Three Course Evening Meal

#### Tour Includes:

Fleetwood Market/Blackpool • Morecambe

#### Facilities Include

Ensuite TV Bar/Lounge !FreeWi-Fi  
\$Heated SwimmingPool #Lift accessto mostfloors  
"Tea/coffee making facilities

Departure	Dates	Price
Mon - Fri	31st July - 4th August	£370

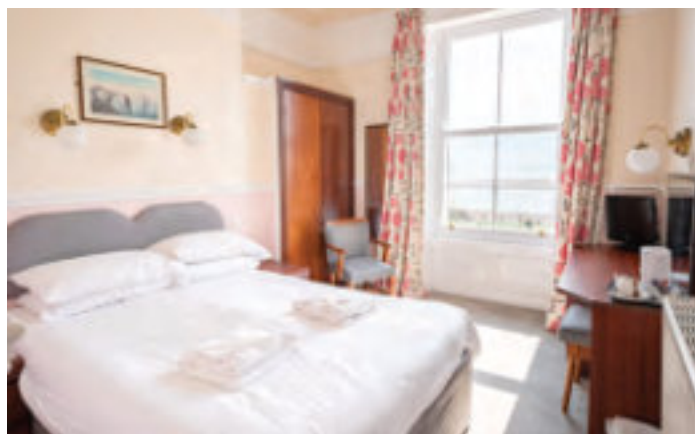
# Exmouth



Being surrounded by sea, Exmouth has miles of beautiful coastal walks and soft sandy beaches making this destination suitable for families. The beaches are excellent for families to swim and play or just to relax, this has been a popular seaside resort since the 18th century and is a healthy thriving town that is proud to be a holiday destination with plenty of things to do.

## Ashton Court Hotel [www.ashtoncourthotel.co.uk](http://www.ashtoncourthotel.co.uk)

The Hotel enjoys magnificent views of the Exe estuary and the beautiful coastline stretching out towards Torbay. All the pleasures of the Seafront are just a short stroll away, with the amenities of the town within easy walking distance. We are fortunate to have the Land Train stop outside the hotel every hour throughout the day. This allows guests to hop on and off at points all along the seafront and in the town centre, and be sure of a ride back to the hotel when they are ready.



### What's Included:

- Return Coach Travel • Traditional Cooked Breakfast
- Three Course Evening Meal
- Ferry Crossing
- Evening Entertainment - see hotel for further information
- Bicton Park & Train Journey (Admission incl.) • Mystery Tour

### Facilities Include

Ensuite TV Bar/Lounge !FreeWi-Fi  
"Tea/coffee making facilities #Lift accessto mostfloors

**Please note: There is a single room supplement at this hotel.**

Departure	Dates	Price
Mon - Fri	22nd - 26th May	£360
Mon - Fri	10th - 14th July	£360







Many now refer to Bournemouth as London by the sea, situated on the South coast of England and one of the United Kingdoms warmest climates, this town truly is a dream location. The towns vibrant centre, award winning gardens and bustling pier are all directly above the miles of Blue Flag golden sandy beaches and stylish promenades. Bournemouth's location is ideal for visiting the surrounding areas. The New Forest, Isle of Purbeck and the world famous Jurassic coastline are all areas of outstanding natural beauty.



## Trouville Hotel [www.trouvillehotel.com](http://www.trouvillehotel.com)

Located just a few minutes stroll from the town centre, award winning beaches, Bournemouth gardens, Bournemouth Pier, BH2 and Bournemouth International Centre, our location is perfect whether you are visiting for business or pleasure. The Trouville Hotel is part of Oceana Hotels & Restaurants.

### What's Included:

- Return Coach Travel • Traditional Cooked Breakfast
- Three Course Evening Meal

### Tour Includes:

Salisbury • New Forest

### Facilities Include

Ensuite TV Bar/Lounge !FreeWi-Fi  
"Lift access to most floors #Tea/coffee making facilities  
\$Gym %Heated Swimming Pool

Departure	Dates	Price
Mon - Fri	3rd - 7th April	£280
Mon - Fri	28th August - 1st September	£320



## The Royal Bath Hotel

[www.britanniahotels.com/hotels/the-royal-bath-hotel-bournemouth](http://www.britanniahotels.com/hotels/the-royal-bath-hotel-bournemouth)  
The Royal Bath Hotel was the first hotel in Bournemouth and embodies the finest traditions of first class comfort and hospitality, so naturally it has a fantastic position on the sea front. Nestled in secluded grounds, with outstanding views across the bay, this classically styled hotel is one of a kind.

### What's Included:

- Return Coach Travel • Traditional Cooked Breakfast
- Three Course Evening Meal

### Tour Includes:

Poole • Weymouth

### Facilities Include

Ensuite TV Bar/Lounge !FreeWi-Fi  
"Lift access to most floors #Tea/coffee making facilities  
%Heated Swimming Pool

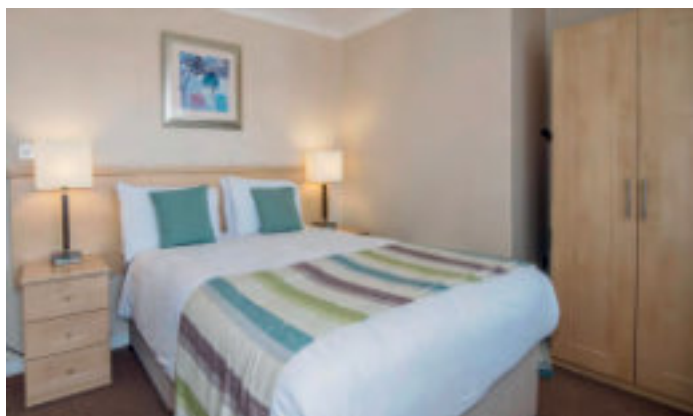
**Please note: There is a single room supplement at this hotel.**

Departure	Dates	Price
Mon - Fri	2nd - 6th October	£245

## Corton



Southwold is famous for some glorious beaches which are lovely and sandy with the odd one or two bright beach huts gracing the shore line. Lots of small independent shops which are all part of the charm of this hidden gem. The Norfolk Broads is less than 30 minutes away where you can take a leisurely boat ride and explore the famous waterways. With a 50 mile stretch of heritage coastline on your doorstep this destination is truly an area not to miss.



### Corton Coastal Village

Corton Coastal Village, is close to the Norfolk Broads and the Sunshine Coast near Lowestoft. Built on a chalet theme, the rooms have clapboard design with fresh pastel interiors.



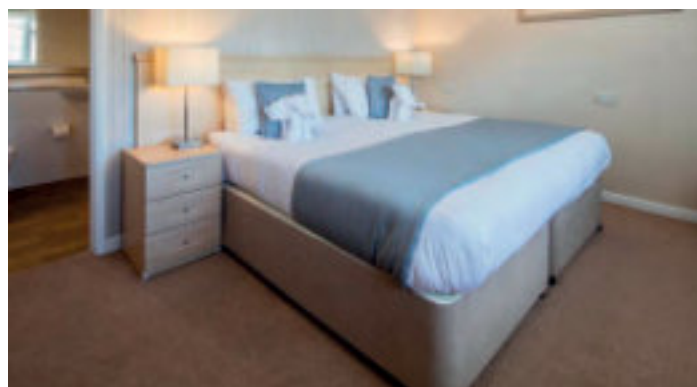
Departure	Dates
Mon - Fri	17th- 21st April

Price
£285

## Isle of Wight



The island continues to be as popular as ever with something to suit all ages. The Isle of Wight offers all visitors a delightful combination of coastal and country scenery with old world villages and the more up to date seaside resorts. Shanklin is the most charming of traditional seaside resorts with beautiful beaches set within a backdrop of sandstone cliffs. The Shanklin Esplanade is lined with traditional seaside amusements, cafes, restaurants and pubs the perfect place to sit back and unwind



### Norton Grange Coastal Village

Norton Grange is a chalet village overlooking the Solent. Everything you need is here to make your stay a memorable one. The accommodation is to a very high standard and comes complete with everything to make your stay comfortable.



Departure	Dates
Mon - Fri	24th - 28th July

Price
£399



## Hayling Island



Hayling Island combines all the attractions of a traditional seaside destination with miles of unspoilt coastline and countryside. The area holds a Blue Flag award as well as Keep Britain Tidy Seaside Award making this five miles of stunning scenery a safe haven for both swimming and other water sports activities.



### Lakeside Village

The Lakeside Coastal Village is situated by the sea on Hayling Island which makes for a great seaside break. The accommodation is a chalet style which is beautifully decorated to a very high standard with everything to make your stay comfortable.



Departure	Dates	Price
Mon - Fri	6th - 10th March	£265
Mon - Fri	11th- 15th September	£375

## Lowestoft



Lowestoft sits proudly in the most northern part of the Suffolk coast. The town is a firm favourite with plenty to see and do, with two piers, a theme park, museums, restaurants and a buzzing zoo there is something for everyone. The beach is Blue Flag with wide golden sands and is perfect for dipping those toes.



### Gunton Hall

Gunton Hall has a distinctive rural feel, it may be within walking distance to the beach, but is surrounded by Suffolk woodland, gardens and a picturesque lake. Accommodation is a chalet type with all facilities to make your stay memorable.

#### What's Included on all tours with Warners:

- Return Coach Travel
- Traditional Cooked Breakfast
- Three Course Evening Meal
- Evening Entertainment - see hotel for further information

#### Tour Includes:

Lakeside - Portsmouth • Mystery Tour  
Norton Grange - Cowes/Newport • Ryde/Shanklin  
Corton - Southwold • Great Yarmouth  
Gunton Hall - Norwich • Norfolk Broads

#### Facilities Include

Ensuite TV Bar/Lounge !Free Wi-Fi  
"Lift access to most floors #Tea/coffee making facilities  
\$Heated Swimming Pool, Sauna & Steam Room

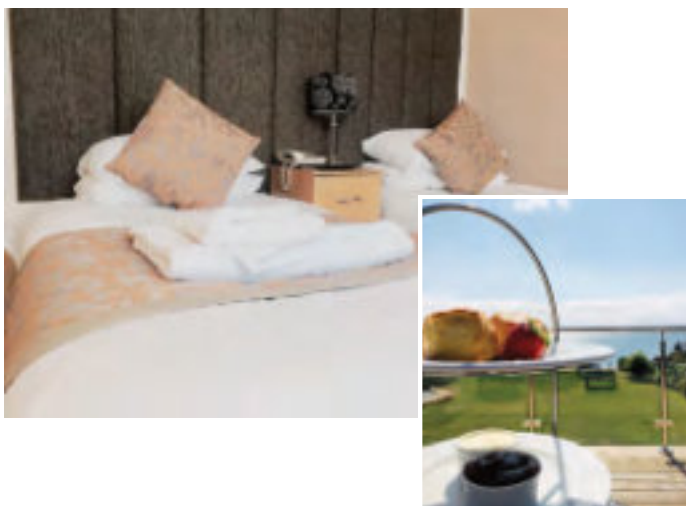
**Please Note: Warner Hotels are a cashless facility (card payment only)**

Departure	Dates	Price
Mon - Fri	30th October - 3rd November	£289

## Falmouth



Beaches, castles, museums, galleries, parks, boat trips, rock pooling and ice creams and that's just the first day of your holiday in Falmouth! Falmouth is a fun base for all the family, with many of Cornwall's top attractions right on the doorstep. There are some terrific family friendly beaches in Falmouth or if you prefer there are some perfect places for a stroll or picnic.



### Membley Hall Hotel [www.membleyhallhotel.co.uk](http://www.membleyhallhotel.co.uk)

Membley Hall Hotel is situated in one of the most picturesque regions of Cornwall which occupies a sea front position with splendid views of Falmouth Bay and the majestic Cornish coastline. The hotel prides itself on making all guests comfortable with all amenities available.

#### What's Included:

- Return Coach Travel • Traditional Cooked Breakfast
- Three Course Evening Meal
- Evening Entertainment - see hotel for further information

#### Tour Includes:

Padstow • St Ives • Mystery tour

#### Facilities Include

Ensuite TV Bar/Lounge! Spa Pool/Sauna  
"Tea/coffee making facilities #Lift access to most floors

\$Bowling Green, Pool Table & Table Tennis %Free Wi-Fi

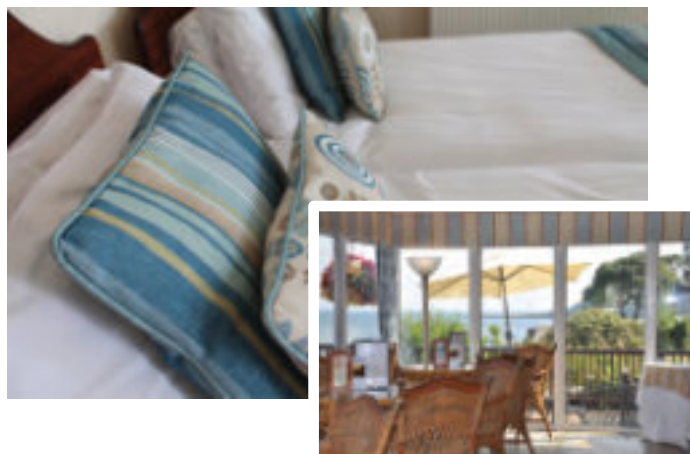
Departure	Dates	Price
Sun - Sat	13th - 19th August	£520

## Looe

NEW  
HOLIDAY



The beautiful seaside town of Looe will keep you entertained no matter what time of year it is. Stand on the quayside in the evening and watch the boats return with the fresh fish of the day ready to supply local restaurants. Looe is also a great place for walking with the endless coastal paths and stunning countryside whilst the soft sandy beaches with rockpools offers endless hours of fun.



### Hannafore Point Hotel [www.hannaforepointhotel.com/](http://www.hannaforepointhotel.com/)

The Hannafore Point offers stunning panoramic views across Looe Bay and the unspoiled Cornish coast. Enjoy beautiful views from the A la Carte and Terrace Bar Restaurants, it has well-appointed en-suite bedrooms with full facilities and an indoor heated swimming pool.

#### What's Included:

- Return Coach Travel • Traditional Cooked Breakfast
- Three Course Evening Meal

#### Tour Includes:

Plymouth • Mystery tour

#### Facilities Include

Ensuite TV Bar/Lounge %Free Wi-Fi  
#Lift access to most floors "Tea/coffee making facilities  
& Heated Indoor Swimming Pool !Spa

Departure	Dates	Price
Mon - Fri	8th - 12th May	£369
Mon - Fri	25th - 29th September	£389



## Newquay



Newquay is one of the most popular resorts in Cornwall offering magnificent beaches with beautiful scenery. The area is renowned for surfing on the famous Fistral Beach whilst the harbour offers a peaceful haven with outstanding habitat. Situated a short walk from the beach is the famous aquarium or if you feel more adventurous why not take a boat trip and try your hand to a spot of mackerel fishing!



### **Sandy Lodge Hotel** [www.sandylodgehotel.co.uk](http://www.sandylodgehotel.co.uk)

The Sandy Lodge Hotel in Newquay is an excellent family run hotel based in Cornwall's premier resort. Situated close to the seafront of Newquay Bay, a friendly approach to customer service you can be assured of a great time at one of Newquay's friendliest Hotels.

#### What's Included:

- Return Coach Travel • Traditional Cooked Breakfast
- Three Course Evening Meal
- Evening Entertainment - see hotel for further information

#### Tour Includes:

Falmouth/Truro • Mystery Tour • Padstow

#### Facilities Include

Ensuite TV Bar/Lounge!Gym "FreeWi-Fi  
#Tea/coffee makingfacilities \$Lift accessto mostfloors

Departure	Dates	Price
Sun - Fri	16th - 21st July	£420

## St. Agnes



St Agnes is a large village on the north coast of Cornwall. The village is situated between the larger towns of Redruth and Newquay and is home to not one but four beaches all of outstanding natural beauty. The area is a haven for wildlife with sharks, seals and dolphins to name but a few. There are many quaint independent shops selling an array of local items and produce along with cafes and pubs to help you wind down after a long day.



### **Rosemundy Hotel** [www.rosemundy.co.uk](http://www.rosemundy.co.uk)

The Rosemundy House Hotel is a family hotel run by the Faulkner family. This elegant Georgian residence dates back to the 18th century and offers tastefully appointed bedrooms. The Rosemundy House Hotel is set in over four acres of private secluded gardens and woodland and is within easy walking distance of the quaint and unspoilt coastal village of St Agnes.

#### What's Included:

- Return Coach Travel • Traditional Cooked Breakfast
- Three Course Evening Meal

#### Tour Includes:

March: Mystery Tour

October: 3 Mystery Tours

#### Facilities Include

Ensuite TV Bar/Lounge "FreeWi-Fi  
\$Lift accessto mostfloors #Tea/coffee makingfacilities

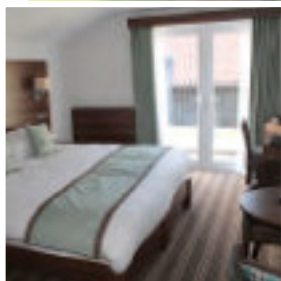
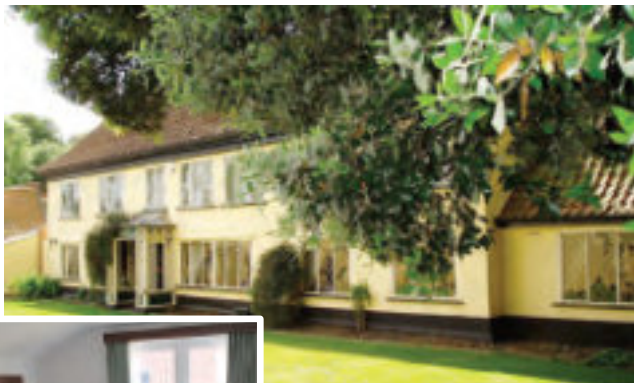
Departure	Dates	Price
Mon - Fri	20th - 24th March	£370
Sun - Fri	8th - 13th October	£425

# Land of Constable

NEW  
HOLIDAY



There are few places in Britain which offer some of the most picturesque and natural outstanding beauty than Constable Country in Suffolk. One of our most celebrated painters of all times, John Constable captured Mother Nature at her finest and this can most certainly be seen today in this untouched area and most certainly won't disappoint.



**Brome Grange** [www.bromegrangehotel.co.uk](http://www.bromegrangehotel.co.uk)

The Brome Grange Hotel offers 44 en-suite bedrooms. All of the 26 courtyard bedrooms enjoy a view over the hotel gardens and each of the rooms has an individual style and superior style beds, which are a key feature of the Hotel.

## What's Included:

- Return Coach Travel • Traditional Cooked Breakfast
- Three Course Evening Meal

## Tour Includes:

Guided tour of Otley Hall & Gardens • Afternoon Tea & Cake

## Facilities Include

Ensuite TV Bar/Lounge !FreeWi-Fi

"Tea/coffee making facilities #Lift accessto most floors

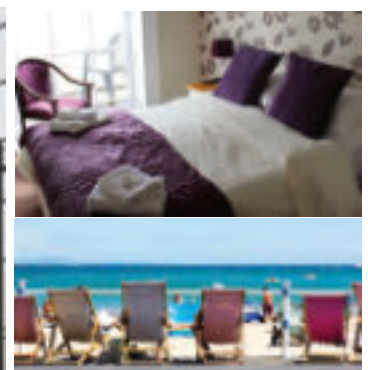
**Please note: There is a single room supplement at this hotel.**

Departure	Dates	Price
Mon - Fri	31st July - 4th August	£325

# Weymouth



This is a popular resort that is situated on the Dorset Coast. King George III began visiting this resort in 1789 and has since grown into the bustling holiday destination it is today. There are plenty of places to visit, from the Blue Flat beaches to the award winning gardens and a beautiful harbour to pass the day away. Weymouth is also home to an ancient stone pier which can view tall ships and fishing yachts heading in and out of the 17th century harbour. The lovely destination has something for everyone so will not disappoint.



## The Hotel Norfolk

This is a very popular hotel and a firm favourite with all our customers. The Hotel Norfolk is in a brilliant location on the seafront overlooking the famous white sandy beaches.

## What's Included:

- Return Coach Travel • Traditional Cooked Breakfast
- Three Course Evening Meal

## Tour Includes:

Lulworth Cove/Swanage • Dorchester/Portland

6 Day Tours: Bridport/Westbay

## Facilities Include

Ensuite TV Bar/Lounge

"Tea/coffee making facilities #Lift accessto most floors

Departure	Dates	Price
Mon - Fri	24th - 28th April	£260
Sun - Sat	2nd - 8th July	£420
Sun - Sat	3rd - 9th September	£399
Mon - Fri	6th - 10th November Turkey & Tinsel	£249



## Llandrindod Wells



Llandrindod was placed on the map during the Victorian era when many flocked to the Welsh waters to enhance their wellbeing. The area is renowned for clean air and no congestion, even after the boom of new shops and hotels springing up during 1865 - 1914. The area is truly a place of beauty and tranquility with endless places to explore and take in the sights and sounds.



### **Metropole Hotel** [www.metropole.co.uk](http://www.metropole.co.uk)

The Metropole Hotel & Spa is one of the highest 'Visit Wales' rated hotel and spa in Mid Wales. A family run business now in its fifth generation, it is the perfect hotel to stay and explore the surrounding areas.

#### What's Included:

- Return Coach Travel • Traditional Cooked Breakfast
- Three Course Evening Meal

#### Tour Includes:

Aberystwyth/Brecon • Builth Wells/Elan Valley Dam

#### Facilities Include

Ensuite TV Bar/Lounge! Spa "Free Wi-Fi  
#Lift access to most floors \$Tea/coffee making facilities  
%Heated Indoor Swimming Pool

**Please note: There is a single room supplement at this hotel.**

Departure	Dates	Price
Sun - Thurs	14th - 18th May	£350
Sun - Thurs	10th - 14th September	£350

## Llandudno



The sheer beauty of North Wales is second to none and Llandudno is the perfect base to tour the surrounding area. Llandudno is the largest of all the Welsh holiday resorts and whilst it still remains a peaceful and dignified atmosphere, it boasts all the amenities you will ever need. Llandudno is within short distance to many other attractions North Wales has to offer so you will never be short of things to do.



### **Kensington Hotel** [www.kensingtonhotel.wales](http://www.kensingtonhotel.wales)

The Kensington Hotel in Llandudno is a classically styled Victorian seafront hotel, predominantly positioned on the central promenade with spectacular views of the Great Orme and Llandudno Bay. Conveniently located for all local attractions, restaurants, bars and an excellent base to explore in and around Llandudno.

#### What's Included:

- Return Coach Travel • Traditional Cooked Breakfast
- Three Course Evening Meal
- Evening Entertainment - see hotel for further information

#### Tour Includes:

Snowdonia Tour • Mystery Tour

#### Facilities Include

Ensuite TV Bar/Lounge "Free Wi-Fi  
#Lift access to all floors \$Tea/coffee making facilities

Departure	Dates	Price
Mon - Fri	10th - 14th April	£320
Mon - Fri	12th - 16th June	£329
Mon - Fri	13th - 17th November Turkey & Tinsel	£329



Situated in the South West corner of Wales, this delightful harbour town and seaside resort is postcard picturesque. Tenby is located in the midst of the Pembrokeshire National Park. This delightful harbour town is one of Pembrokeshire's most popular destinations which is unspoilt and has not lost any of its natural charm. There are four beautiful golden beaches with plenty of shops, pubs and cafes all connected by cobbled streets.



**Clarence Hotel** [www.clarencehotel-tenby.co.uk](http://www.clarencehotel-tenby.co.uk)

With stunning views of Caldey Island the hotel is ideally situated for all that Tenby has to offer. The golden sandy beaches stretch for miles and are only 200 yards from the hotel or guests can enjoy a drink from The Seagull Bar in the beautiful rose garden which serve light refreshments.

#### What's Included:

- Return Coach Travel • Traditional Cooked Breakfast
- Three Course Evening Meal

#### Tour Includes:

Haverford West/St Davids • Caernarfon/Saunders Foot

#### Facilities Include

Ensuite TV Bar/Lounge !FreeWi-Fi  
"Tea/coffee making facilities #Lift access to most floors

Departure	Dates	Price
Thurs- Mon	2nd - 6th March	£280



## Why not join us on a Magical Mystery Tour!

All part of the fun of not knowing where we will be heading but with a great group of like minded travellers we can set off and see where we all end up!

So why not give it a try as we are sure you won't be disappointed!

#### What's Included:

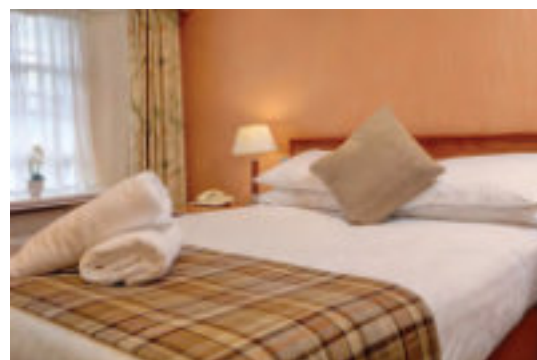
- Return Coach Travel • Traditional Cooked Breakfast
- Three Course Evening Meal

Departure	Dates	Price
Mon - Fri	13th - 17th March	£285
Mon - Fri	19th - 23rd June	£285
Mon - Fri	23rd - 27th October	£285





This beautiful tour centres around Loch Lomond but incorporating all the stunning scenery of the surrounding area. The tour will take in the sights and sounds of Loch Katrine 'all aboard' the steam ship SS Walter Scott and then ride the worlds only rotating boat lift which is something not to miss! We have something for everyone on this tour - steam boats, steam railways and great company!



## Winnock Hotel [www.winnockhotel.com](http://www.winnockhotel.com)

The Winnock Hotel dates back to the late 1700s and throughout history has always offered lodging to weary travellers passing through by Loch Lomond and the Trossachs areas. Formerly a coaching inn, The Winnock Hotel has been lovingly restored and tastefully extended to its present day form. Offering 73 bedrooms, cosy lounges; many with open log fires, a characterful restaurant, function room and public lounge bar, the hotel has many things in common with its historic counterpart with one striking similarity - friendly, welcoming service. Guests take time to savour the fine food, wines, ales and whiskies on offer from our Merlin Restaurant and Ptarmigan Bar, idling the time away planning their days adventure in the light and airy Conservatory or snuggled up by one of our log fires.

### Facilities Include

Ensuite TV Bar/Lounge !FreeWi-Fi  
"Lift access to most floors #Tea/coffee making facilities

### What's Included:

- Return Coach Travel
- Traditional Cooked Breakfast
- Three Course Evening Meal

### Tour Includes:

2 hour cruise on Loch Katrine on steam ship 'SS Walter Scott' with lunch at the Lochside.

Ride the Falkirk Wheel (the worlds only rotating boat lift)  
Journey on the Bo'Ness & Kinneil Steam Railway with afternoon Tea.

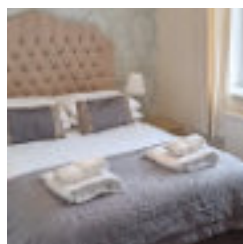
Departure	Dates	Price
Sun - Fri	4th - 9th June	£559



## Ross-on-Wye



Symonds Yat (near Ross-on-Wye) is a beautiful village and a very popular tourist destination which straddles the River Wye. The River Wye created a deep gorge exposing beautiful cliff faces offering those who like a spot of bird watching some excellent areas to view the bird population. Local places of interest include Reglan Castle which was the last castle to be built in Wales this area is full of historical places staged with some spectacular back drops making this a visit not to be missed.



### The Paddocks Hotel [www.paddockshotel.com](http://www.paddockshotel.com)

The Paddocks Hotel is located just a short stroll from the banks of the River Wye in the picturesque Wye Valley and not far from the historic border towns of Monmouth and Ross-on-Wye. The Paddocks Hotel gardens are beautifully landscaped with views of the Wye Valley as a stunning backdrop.

#### What's Included:

- Return Coach Travel • Traditional Cooked Breakfast
- Three Course Evening Meal

#### Tour Includes:

Tintern/Monmouth • Hereford • Boat Trip (fee included)

#### Facilities Include

Ensuite TV Bar/Lounge !FreeWi-Fi  
"Tea/coffee making facilities #Lift accessto most floors

Departure	Dates	Price
Mon - Fri	10th - 14th July	£390

## Newcastle

NEW  
HOLIDAY



Newcastle, located on the River Tyne's northern bank the area is buzzing with plenty of cosmopolitan bars, restaurants and public spaces. The main attractions include the famous Tyne Bridge, Discovery Museum and of course the St. James Park Football Stadium to name but a few.



### Holiday Inn Gosforth Park

[www.ihg.com/holidayinn/hotels/gb/en/newcastle-upon-tyne](http://www.ihg.com/holidayinn/hotels/gb/en/newcastle-upon-tyne)

Gosforth Park hotel sits in a peaceful setting close to all the local attractions. Enjoy a walk in the sprawling grounds, clock a few laps in the leisure club's indoor pool or wind down in the spa bath this hotel is everything you need to help you explore this area.

#### What's Included:

- Return Coach Travel • Traditional Cooked Breakfast
- Three Course Evening Meal

#### Tour Includes:

Holy Island/Bamburgh/Sea House (Tidetimes permitting)  
• Hadrian's Wall/ Hexham

#### Facilities Include

Ensuite TV Bar/Lounge !FreeWi-Fi  
"Tea/coffee making facilities #Lift accessto most floors  
\$Heated IndoorSwimmingPool

Departure	Dates	Price
Mon - Fri	13th - 17th March	£299
Mon - Fri	30th October - 3rd November	£299



# Windermere

NEW  
HOLIDAY



Lake Windermere, located in the heart of the Lake District, is the largest naturally formed lake in England. One of England's most popular destinations for outdoor activities, climbing, rambling, boating, cycling, birdwatching, fishing and sightseeing. At Windermere you are perfectly placed within striking distance of such iconic natural features as Scafell Pike, Helvellyn, Ullswater and Keswick.



## The Windermere Hotel

[www.bespokehotels.com/windermere-hotel](http://www.bespokehotels.com/windermere-hotel)

Built in 1847, this elegant hotel in the Lake District National Park is a 3-minute walk from the train station and 15 minutes on foot from Lake Windermere. There's a cosy restaurant and a bar, plus a furnished patio and a garden.

### What's Included:

- Return Coach Travel
- Traditional Cooked Breakfast
- Three Course Evening Meal

### Tour Includes:

Ambleside/Grassmere/Keswick • Mystery Tour

### Facilities Include

Ensuite TV Bar/Lounge

!Tea/coffee making facilities "Lift access to most floors

**Please note: There is a single room supplement at this hotel**

Departure	Dates	Price
Mon - Fri	16th- 20th October	£289



Tel: 0115 926 3138

Mobile: 07814 768783



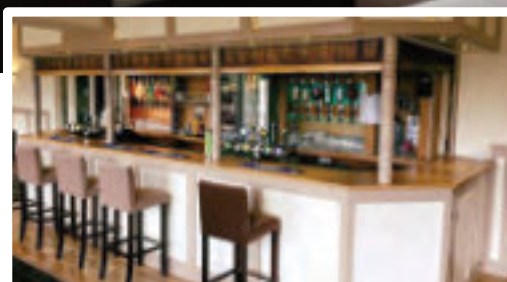
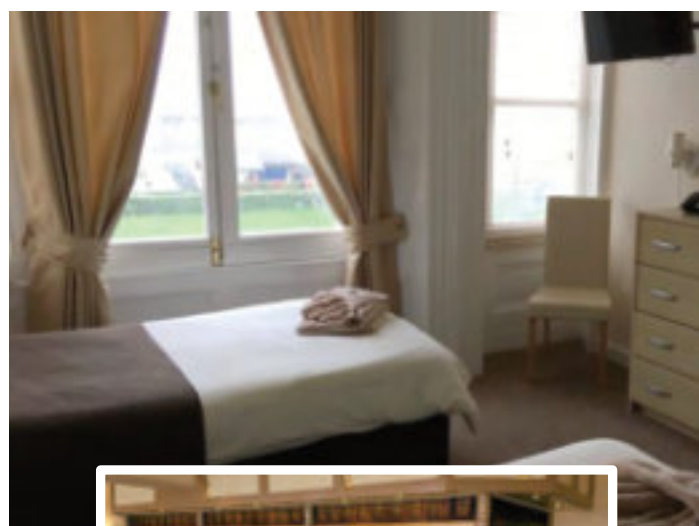


Weston-super-Mare is a great traditional seaside resort being one of the largest of the Somerset seaboard. The wide sweep of the Weston Bay with views over to Wales and down to Exmoor never disappoints. There are miles of clean, flat sandy beaches which will be perfect for young children to explore. Weston's Grand pier has been newly built which is worth a visit after the great fire or take a walk along the level promenade boasting superb views over the Channel.



## The Royal Grosvenor Hotel [www.royalgrosvenorhotel.co.uk](http://www.royalgrosvenorhotel.co.uk)

The Royal Grosvenor Hotel, offers a very warm welcome to all their guests. The hotel is in prime location for all local attractions within Weston-super-Mare and has views overlooking the Grande Pier.



### Facilities Include

Ensuite TV Bar/Lounge !FreeWi-Fi  
"Tea/coffee making facilities #Lift access to most floors

### What's Included:

- Return Coach Travel • Traditional Cooked Breakfast
- Three Course Evening Meal
- Evening Entertainment - see hotel for further information

### Tour Includes:

Cheddar Gorge/Wells • Mystery Tour

Departure	Dates	Price
Mon - Fri	27th February - 3rd March	£180
Mon - Fri	17th - 21st April	£265
Mon - Fri	4th - 8th September	£285
Mon - Fri	6th - 10th November	£290



**THURSFORD**  
TRULY UNIQUE

# *Christmas Spectacular*



Dates to be confirmed





# Christmas Spectacular

## Full Christmas Package



The Trouville Hotel - Bournemouth £520

The Kensington Hotel - Llandudno £535

**23rd - 27th December**

At this special time of the year we always take pride in selecting a truly special hotel for you, so that our customers can celebrate this festive season in style!

The tour includes executive coach travel, a selection of festive foods, bed, full English breakfast and evening meals all surrounded by a festively decorated hotel.

For further information please contact either Alicia or Sandra and they will only be too happy to help you with your booking







# 2023

*Happy New Year*

## New Year Extravaganza

---

**Full New Year Package  
Norfolk Hotel - Weymouth  
£375**

**30th December - 3rd January**

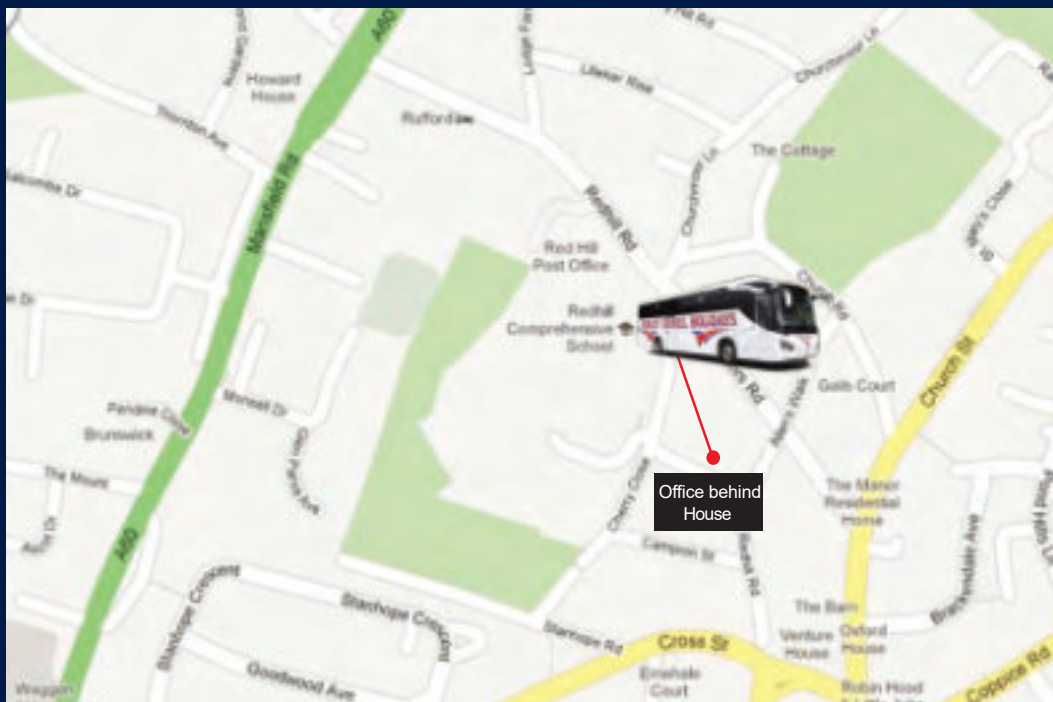
We will be celebrating the New Year at The Royal Hotel. The hotel as always offers a warm welcome at this joyful time and have a programme full of events to keep you entertained.

The tour includes executive coach travel, a selection of festive foods, bed, full English breakfast and evening meals all surrounded by a festively decorated hotel.

For further information please contact either Alicia or Sandra and they will only be too happy to help you with your booking



# FOREST TRAVEL HOLIDAYS



Forest Travel Holidays

30 Redhill Road Arnold Nottingham NG5 8GW

t: 0115 926 3138 m: 07814 768783