

# Great British Coach Holidays 2024



**FOREST TRAVEL  
HOLIDAYS LTD**



Small family coach company with family values!



## HOLIDAY INFORMATION

### SUITCASE REQUIREMENTS

There will be a limit restriction to one suitcase per person.  
Maximum size: (H-76 x W-55 x D-31cm)

### SMALL SCOOTERS/WHEELCHAIRS/WALKING FRAMES

Any of the above items must be declared when booking your trip to a Forest Travel member of staff. We will endeavour to allow such items to travel with you but reserve the right to refuse if limited space is available. A member of staff will telephone you prior to your travel.

**BOOKINGS** - A non refundable deposit of £25 per person will secure your reservation. The balance is due at least 28 days prior to departure. We reserve the right to cancel any booking and retain the deposit if the full balance is not received by the due date. Single supplements are charged at the discretion of the hotel. Any special requests will be noted at the time of booking, and will be passed on to the hotel. Although we cannot guarantee to fulfil every request we will do our best to accommodate them.

Seat numbers will be issued with bookings on a first come first serve basis. It may be necessary to adjust seating arrangements but this will be avoided as much as possible.

**Cancellations** - All deposits are non refundable. Cancellations must be confirmed in writing. If a cancellation occurs within 28 days of departure the following charges apply:

Prior to 28 days	deposit only
21 - 28 days	25% of full cost of tour
14 - 21 days	50% of full cost of tour
7 - 14 days	100% of holiday cost

**Inclusive Charges** - The cost of the tour includes local pick up and departures, a reserved coach seat and hotel accommodation. Forest Travel Holidays can offer local pick-ups, please contact the office for further information.

5 day tours include 2 excursions

8 day tours include 3 excursions.

Prices include ferries where applicable.

All prices are inclusive of VAT at the current rate of 20%, any variation by the Government to this rate may dictate a change to the published price. All prices are correct at the time of going to print as of October 2023.

**Fuel Costs** - Due to the current climate, prices may increase due to fuel costs which will be totally out of our control. We will however, endeavour to keep all our customers informed and up to date on this situation.

**Complaints** - Should you have a complaint please inform your driver as soon as possible, he will do his best to solve any issues within his control. If the matter cannot be rectified complaints should be made in writing within seven days of the return of your tour to the head office.

**Disclaimer** - Forest Travel Holidays reserves the right to cancel a tour at any time, if this is the case an alternative tour will be offered or a full refund given.

**We no longer sell travel insurance.**



# welcome

Welcome to another year with Forest Travel Holidays!

Firstly, I would like to thank each and every one of you for supporting us through some very challenging times in the last couple of years, I feel truly blessed and grateful to have the continued loyalty from all our customers.

The new brochure is here and full of exciting new and old destinations. We have tried to keep our prices as competitive as we can, without compromising the quality of service we like to supply to all our customers. This year we endeavour to keep to the same number of pickups but this may be subject to change, whilst our friends in the North will still have the small extra charge to cover fuel costs.

I hope you like what we have to offer you for 2024 and hope to see you all soon.

Happy Holidays!

Barrie

Barrie & The Team

## Easy Steps to book your holiday



**1** Choose your holiday and then telephone the office to speak to a member of staff who will guide you through your booking. A £25 deposit will be required within 4 weeks of your booking. Please note we have the right to cancel if no deposit is paid.

**2** The full balance is due **4 weeks** prior to travel. **Please note we have the right to cancel if payment is not received in full.** If sharing a twin room and 1 person within that party cancels, there will be a single room supplement incurred for the travelling passenger.

**3** The week before you travel you will be telephoned with confirmation of your pickup time and place.



## Holiday Dates

January			Page
22nd-26th	Mon-Fri	Warners	12
29th-2nd	Mon-Fri	Great Yarmouth	18
29th-2nd	Mon-Fri	Warners	12
February			
5th-9th	Mon-Fri	Southport	7
5th-9th	Mon-Fri	Cromer	14
12th-16th	Mon-Fri	Bideford	21
18th-22nd	Sun-Thurs	WSM	2
19th-23rd	Mon-Fri	Torquay	17
26th-1st	Mon-Fri	Babbacombe	5
March			
4th-8th	Mon-Fri	Liverpool	5
4th-8th	Mon-Fri	Morecambe	21
11th-15th	Mon-Fri	Exmouth	16
11th-15th	Mon-Fri	Paignton	20
18th-22nd	Mon-Fri	Tenby	4
18th-22nd	Mon-Fri	Whitby	14
24th-28th	Sun-Thurs	Eastbourne	13
25th-29th	Mon-Fri	Scarborough	8
April			
1st-5th	Mon-Fri	Llandudno	7
1st-5th	Mon-Fri	Isle of Wight	15
8th-12th	Mon-Fri	Scarborough	8
8th-12th	Mon-Fri	Newcastle	17
15th-19th	Mon-Fri	Skegness	4
15th-19th	Mon-Fri	Great Yarmouth	18
22nd-26th	Mon-Fri	Llandrindod Wells	6
22nd-26th	Mon-Fri	Warners	10
29th-3rd	Mon-Fri	Weymouth	6
May			
6th-10th	Mon-Fri	WSM	2
6th-10th	Mon-Fri	Warners	10
19th-23rd	Sun-Thurs	Scotland	1
27th-31st	Mon-Fri	Paignton	20
June			
2nd-6th	Sun-Thurs	Sidmouth	2
10th-14th	Mon-Fri	Llandudno	7
10th-14th	Mon-Fri	Tiverton	22
15th-21st	Sat-Fri	Eastbourne	13
16th-22nd	Sun-Sat	Falmouth	13
24th-28th	Mon-Fri	Tenby	4
July			
1st-5th	Mon-Fri	Exmouth	16
1st-5th	Mon-Fri	Torquay	17
8th-12th	Mon-Fri	Paignton	20
8th-12th	Mon-Fri	Morecambe	21
15th-19th	Mon-Fri	Warners	11
15th-19th	Mon-Fri	Lytham St Annes	16
22nd-26th	Mon-Fri	Southport	7
22nd-26th	Mon-Fri	Isle of Wight	15
22nd-26th	Mon-Fri	Bournemouth	20
28th-2nd	Sun-Fri	Weymouth	6
29th-2nd	Mon-Fri	Buckinghamshire	19
August			
5th-9th	Mon-Fri	Skegness	4
5th-9th	Mon-Fri	Mold	18
12th-16th	Mon-Fri	Isle of Wight	15
12th-16th	Mon-Fri	Bideford	21
19th-23rd	Mon-Fri	Scarborough	8
31st-7th	Sat-Sat	Eastbourne	13
September			
2nd-6th	Mon-Fri	WSM	2
9th-13th	Mon-Fri	Babbacombe	5
16th-20th	Mon-Fri	Scotland	1
16th-20th	Mon-Fri	Ilfracombe	3
23rd-27th	Mon-Fri	Sidmouth	2
23rd-27th	Mon-Fri	Warners	11
30th-4th	Mon-Fri	Kent	3
30th-4th	Mon-Fri	Morecambe	21
October			
7th-11th	Mon-Fri	Liverpool	5
7th-11th	Mon-Fri	Whitby	14
14th-18th	Mon-Fri	Blackpool	19
21st-25th	Mon-Fri	Scarborough	8
28th-1st	Mon-Fri	Exmouth	16
28th-1st	Mon-Fri	Mystery Tour	23
November			
4th-8th	Mon-Fri	WSM	2
11th-15th	Mon-Fri	Tenby	4
11th-15th	Mon-Fri	Llandudno	7
25th-29th	Mon-Fri	Torquay	17
25th-29th	Mon-Fri	Bideford	21
December			
2nd-6th	Mon-Fri	Warners	12
2nd-6th	Mon-Fri	Paignton	20
9th-13th	Mon-Fri	Skegness	4
23rd-27th	Mon-Fri	Christmas Tour	24
30th-2nd	Mon-Thurs	New Year Tour	24



This beautiful tour centres around Loch Lomond but incorporating all the stunning scenery of the surrounding area. There is an abundance of things to see and do in the area from historic places and towns plus beautiful scenic drives and walks. With the whole of Central Scotland being easily accessible, there are many attractions available for you to visit from historic castles, distilleries, galleries and even film locations!



## Winnock Hotel

[www.winnockhotel.com](http://www.winnockhotel.com)

The Winnock Hotel has been lovingly restored and tastefully extended to its present day form. Guests can take time to savour the fine food, wines, ales and whiskies on offer whilst idling the time away planning their days adventure in the light and airy Conservatory.

### What's Included:

- Return Coach Travel
- Traditional Cooked Breakfast
- Three Course Evening Meal

### Tour Includes:

- A wildlife Mountain Safari in Highland Perthshire
- Cruise from North Berwick to Bass Rock & Craigleith Cliffs (chance to see puffins/grey seals & gannets)
- A visit to the Sea Bird Discovery Centre
- A visit to the Sea Life Centre with the otter experience
- 1 hour cruise on Loch Katrine with lunch
- Viewing of Red Kites from a hide at Argaty

### Facilities Include

En suite TV Bar/Lounge!Free Wi-Fi

"Tea/coffee makingfacilities

**Please note: There is a single room supplement at this hotel.**

Departure	Dates	Price
Sun - Thurs	19th - 23rd May	£599



## New Hotel 2024

## The Buchanan Arms Hotel & Leisure Club

[www.buchanan-arms.co.uk](http://www.buchanan-arms.co.uk)

Buchanan Arms & Leisure Club, spread over 95 acres of parkland is a Boutique Hotel, with several tales to tell. Buchanan Arms & Leisure Club's origin goes back to the Buchanan of Drumakill, Lairds who owned extensive lands mainly at Drymen, Ross Priory, and Gartocharn. Built-in 1763 it was an Inn and Farmhouse. When you stay at Buchanan Arms & Leisure Club, there are a host of activities available in the immediate area for you to discover - from walking to fishing and golfing to bird watching, you'll be spoilt for choice - and with the whole of Central Scotland being easily accessible this is a place not to miss.

### What's Included:

- Return Coach Travel
- Traditional Cooked Breakfast
- Packed Lunch
- Three Course Evening Meal
- Evening Entertainment
- Free Bar 7.30pm - 10.30pm

### Tour Includes:

Edinburgh • Helensburgh/Luss • Mystery Tour

### Facilities Include

En suite TV Bar/Lounge!Free Wi-Fi

"Tea/coffee makingfacilities#Spa

Departure	Dates	Price
Mon - Fri	16th - 20th September	£580



## Weston-super-Mare



Weston-super-Mare is a great traditional seaside resort being one of the largest of the Somerset seaboard. The wide sweep of the Weston Bay with views over to Wales and down to Exmoor never disappoints. There are miles of clean, flat sandy beaches which will be perfect for young children to explore. Weston's Grand pier is worth a visit or take a walk along the level promenade boasting superb views over the Channel.



### The Royal Grosvenor Hotel

[www.royalgrosvenorhotel.co.uk](http://www.royalgrosvenorhotel.co.uk)

The Royal Grosvenor Hotel, offers a very warm welcome to all their guests. The hotel is in prime location for all local attractions within Weston-super-Mare and has views overlooking the Grande Pier.

#### What's Included:

- Return Coach Travel
- Traditional Cooked Breakfast
- Three Course Evening Meal
- Evening Entertainment - see hotel for further information

#### Tour Includes:

Bath • Wells/Glastonbury

#### Facilities Include

En suite TV Bar/Lounge !Free Wi-Fi  
"Tea/coffee making facilities #Lift accessto mostfloors

Departure	Dates	Price
Sun - Thurs	18th - 22nd February	£199
Mon - Fri	6th - 10th May	£280
Mon - Fri	2nd - 6th September	£299
Mon - Fri	4th - 8th November (Turkey & Tinsel)	£299

## Sidmouth



A UNESCO World Heritage Site, Sidmouth is a seaside town that is different to all the other destinations in this area. Sitting along the beautiful coastline and surrounded by spectacular countryside and Blue Flag award winning beaches, Sidmouth allows you to enjoy the best of both worlds. The area offers everything a beach holiday would provide whilst having a rural feel with a real community atmosphere.



### Royal York & Faulkner Hotel

[www.royalyorkhotel.co.uk](http://www.royalyorkhotel.co.uk)

The Royal York and Faulkner Hotel is a magnificent Regency Hotel with an unrivalled position on Sidmouth's elegant Esplanade. Just a stone's throw from the beach and the picturesque town centre, our seafront hotel is the perfect choice for a relaxing break in the unspoilt seaside resort of Sidmouth.

#### What's Included:

- Return Coach Travel
- Traditional Cooked Breakfast
- Three Course Evening Meal

#### Tour Includes:

Seaton Tramway Museum (inc. tram ride with Devon Cream Tea)  
Mystery Tour • Donkey Sanctuary

#### Facilities Include

En suite TV Bar/Lounge !Free Wi-Fi  
"Tea/coffee making facilities #Lift accessto mostfloors

Departure	Dates	Price
Sun - Thurs	2nd - 6th June	£499
Mon - Fri	23rd - 27th September	£499



## Ilfracombe



Ilfracombe is the jewel of North Devon. This vibrant resort has a fully working harbour which hosts the famous 'Verity' statue by Damien Hirst. There is an award winning aquarium near to the town centre and a short distance from the unique Tunnels Beaches which will take you back to the Victorian days of bathing.

### New Hotel 2024



#### The Carlton Hotel

[www.ilfracombecarlton.co.uk](http://www.ilfracombecarlton.co.uk)

The Carlton Hotel sits within one of the most picturesque coastal towns in North Devon. Surrounded by some of England's most beautiful beaches and Exmoor National Park, Ilfracombe enjoys the best that countryside and coast have to offer. Modern rooms, soft beds, great facilities along with fresh food served daily, makes this a hotel not to miss!

#### What's Included:

- Return Coach Travel
- Traditional Cooked Breakfast
- Three Course Evening Meal

#### Tour Includes:

Barnstaple/Woolacombe • Lynmouth/Minehead

#### Facilities Include

En suite TV Bar/Lounge! Free Wi-Fi  
"Tea/coffee making facilities #Lift access to most floors

Departure	Dates	Price
Mon - Fri	16th - 20th September	£399

## Kent



The Garden of England is one of the best UK destinations for short breaks, with a multitude of things to do and places to see. With some of the best beaches in Europe - voted by Lonely Planet - as well as art galleries, elegant stately homes, fun-filled family attractions, and more than 4,000 of exhilarating foot and cycle trails this is an area not to miss!

### New Hotel 2024



#### Bridgewood Manor Hotel

[www.bridgewoodmanorhotel.com](http://www.bridgewoodmanorhotel.com)

Bridgewood Manor Hotel and Spa is a charming four-star hotel near Rochester that'll feel like a home away from home. With beautiful rooms, a luxurious spa, 24-hour room service and a well-equipped gym, you can rest assured you'll leave our hotel relaxed and well-rested.

#### What's Included:

- Return Coach Travel
- Traditional Cooked Breakfast
- Three Course Evening Meal

#### Tour Includes:

Chartwell House/Gardens & Studio (Admission inc.)  
(Home of Winston Churchill) • Whitstable/Hearn Bay • Canterbury

#### Facilities Include

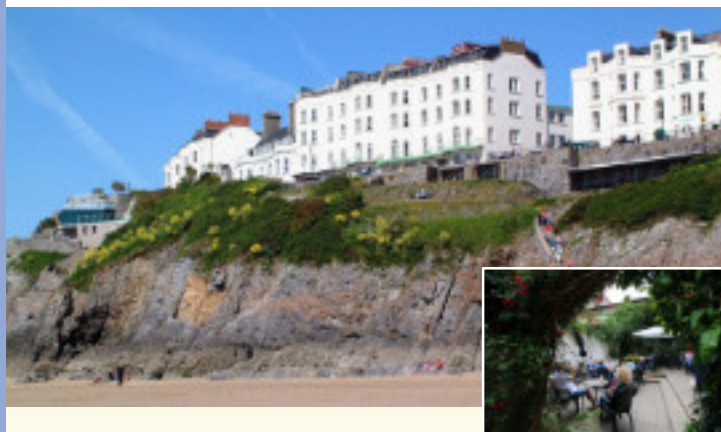
En suite TV Bar/Lounge! Free Wi-Fi  
\$Heated Indoor Swimming Pool  
"Tea/coffee making facilities #Lift access to most floors  
**Please note: There is a single room supplement at this hotel.**

Departure	Dates	Price
Mon - Fri	30th September - 4th October	£369

## Tenby



Tenby is located in the midst of the Pembrokeshire National Park. This delightful harbour town is one of Pembroke's most popular destinations which is unspoilt and has not lost any of its natural charm. There are four beautiful golden beaches with plenty of shops, pubs and cafes all connected by cobbled streets.



### Clarence House Hotel

[www.clarencehotel-tenby.co.uk](http://www.clarencehotel-tenby.co.uk)

The Clarence House Hotel is superbly situated in the middle of the Esplanade on the South Shore with superb views of St Catherine's Island, Castle Beach, Caldey Island and Giltar Point. There is a beautiful Rose Garden for those afternoons where you need time to relax.

#### What's Included:

- Return Coach Travel
- Traditional Cooked Breakfast
- Three Course Evening Meal

#### Tour Includes:

St David's/Fishguard • Carmarthen/Saundersfoot

#### Facilities Include

En suite TV Bar/Lounge !Free Wi-Fi  
"Tea/coffee making facilities #Lift accessto mostfloors

Departure	Dates	Price
Mon - Fri	18th - 22nd March	£320
Mon - Fri	24th - 28th June	£410
Mon - Fri	11th - 15th November - Turkey & Tinsel	£349

## Skegness



Skegness is known as the fun coast and is one of the main resorts in the area, therefore making it a very popular resort for over 100 years. Skegness has never lost its charm over the years and provides a fun filled holiday to accommodate all ages. The beaches still have the traditional donkey rides and still retains it's award for the clean sands. There is something for everyone all within walking distance!



### The Royal Hotel

[www.theroyalhotelskegness.co.uk](http://www.theroyalhotelskegness.co.uk)

The Royal Hotel is an elegant 19th century hotel and is centrally located within easy walking distance of all the leading attractions Skegness has to offer.

#### What's Included:

- Return Coach Travel
- Traditional Cooked Breakfast
- Three Course Evening Meal

#### Tour Includes:

Louth/Mablethorpe • Boston

#### Facilities Include

En suite TV Bar/Lounge !Free Wi-Fi  
"Tea/coffee making facilities #Lift accessto mostfloors

Departure	Dates	Price
Mon - Fri	15th - 19th April	£268
Mon - Fri	5th - 9th August	£296
Mon - Fri	9th - 13th December - Turkey & Tinsel	£288



## Babbacombe



Babbacombe is a laid back neighbour to the ever buzzing Torquay and part of the beautiful English Riviera. Picturesque views and rich heritage along with the warm climate, this classy Victoria holiday destination will help you wind down and relax. There is a wide choice of good local food and drink places all serving excellent dishes whilst incorporating the views of Babbacombe beach.



### The Babbacombe Hotel

[www.thebabbacombehotel.co.uk](http://www.thebabbacombehotel.co.uk)

Positioned on the flat Babbacombe Downs overlooking the sea with stunning views from the bar, restaurant and function room. You'll find that The Babbacombe Hotel makes for the perfect setting during your stay on the English Riviera.

#### What's Included:

- Return Coach Travel
- Traditional Cooked Breakfast
- Three Course Evening Meal

#### Tour Includes:

Dartmouth • Brixham/Paignton

#### Facilities Include

En suite TV Bar/Lounge!Free Wi-Fi

"Tea/coffee makingfacilities #Lift accessto mostfloors

**Please note: There is a single room supplement at this hotel.**

Departure	Dates	Price
Mon - Fri	26th February - 1st March	£235
Mon - Fri	9th - 13th September	£365

## Liverpool



Liverpool is the fourth largest city in the United Kingdom and conjures up images of maritime history, music and football. The town is now bulging with famous shops, restaurants and trendy wine bars and offers some world class museums and galleries. Should you wish to escape the buzz of the bright lights there are a lot of award winning beaches and coastal walks nearby plus stunning parks and botanical gardens.



### Adelphi Hotel

[www.britanniahotels.com](http://www.britanniahotels.com)

The Adelphi Hotel stands proudly in the heart of Liverpool city centre, offering a grand setting rich in history. This fabulous Edwardian style building is the perfect choice with tastefully decorated rooms to make your stay enjoyable and most importantly - relaxing!

#### What's Included:

- Return Coach Travel
- Traditional Cooked Breakfast
- Three Course Evening Meal
- Evening Entertainment - see hotel for further information

#### Tour Includes:

Chester • Half day tour of Liverpool with Guide

#### Facilities Include

En suite TV Bar/Lounge!Free Wi-Fi

"Tea/coffee makingfacilities #Lift accessto mostfloor

**Please note: There is a single room supplement at this hotel.**

Departure	Dates	Price
Mon - Fri	4th - 8th March - 2 for 1 Bar	£259
Mon - Fri	7th - 11th October	£259



## Llandrindod Wells



Llandrindod Wells was placed on the map during the Victorian era when many flocked to the Welsh waters to enhance their wellbeing. The area is renowned for clean air and no congestion, even after the boom of new shops and hotels springing up during 1865 - 1914. The area is truly a place of beauty and tranquility with endless places to explore and take in the sights and sounds.



### Metropole Hotel

[www.metropole.co.uk](http://www.metropole.co.uk)

The Metropole Hotel & Spa is one of the highest 'Visit Wales' rated hotel and spa in Mid Wales. A family run business now in its fifth generation, it is the perfect hotel to stay and explore the surrounding areas.

#### What's Included:

- Return Coach Travel
- Traditional Cooked Breakfast
- Three Course Evening Meal

#### Tour Includes:

Aberystwyth/Gigrin Farm Kite Feeding with Tea & Cake - (Admission Inc.) • Brecon/Builth Wells • Elan Valley Dam

#### Facilities Include

En suite TV Bar/Lounge! Spa "Free Wi-Fi  
#Lift accessto mostfloors \$Tea/coffee makingfacilities  
%Heated IndoorSwimmingPool

**Please note: There is a single room supplement at this hotel.**

Departure	Dates	Price
Mon - Fri	22nd - 26th April	£375

## Weymouth



This is a popular resort that is situated on the Dorset Coast. here are plenty of places to visit, from the Blue Flat beaches to the award winning gardens and a beautiful harbour to pass the day away. Weymouth is also home to an ancient stone pier which can view tall ships and fishing yachts heading in and out of the 17th century harbour. The lovely destination has something for everyone so will not disappoint.



### The Hotel Norfolk

This is a very popular hotel and a firm favourite with all our customers. The Hotel Norfolk is in a brilliant location on the sea front overlooking the famous white sandy beaches.



#### What's Included:

- Return Coach Travel
- Traditional Cooked Breakfast
- Three Course Evening Meal

#### Tour Includes:

Bournemouth • Bridport/West Bay

#### Facilities Include

En suite TV Bar/Lounge "Free Wi-Fi  
\$Tea/coffee makingfacilities #Lift accessto mostfloors

Departure	Dates	Price
Mon - Fri	29th April - 3rd May	£279
Sun - Fri	28th July - 2nd August	£459

## Southport



Southport has beautiful beaches with an un-spoilt coastline, wonderful natural beauty and one of the oldest piers in the UK. There is a superb choice of restaurants, pubs, family attractions and a vibrant events programme - a tradition that is over 100 years old! It was even rumoured that Napoleon re-modelled certain parts of Paris based on his knowledge of Southport during his stay in the town back in the mid 19th century.

### New Hotel 2024



### Prince of Wales Hotel

[www.britanniahotels.com](http://www.britanniahotels.com)

The Prince of Wales Hotel sits in a great location, right by the sea, perfect for those who wish to walk along the beach and take in the clear sea air. Southport also has many other attractions for you to visit, whether you love shopping, golf, theme parks or glorious gardens, there is something here for you.

#### What's Included:

- Return Coach Travel
- Traditional Cooked Breakfast
- Three Course Evening Meal

#### Tour Includes:

Chorley Market • Liverpool

#### Facilities Include

En suite TV Bar/Lounge !Free Wi-Fi

"Tea/coffee making facilities #Lift accessto mostfloors

**Please note: There is a single room supplement at this hotel.**

Departure	Dates	Price
Mon - Fri	5th - 9th February	£225
Mon - Fri	22nd - 26th July	£299

## Llandudno



The sheer beauty of North Wales is second to none and Llandudno is the perfect base to tour the surrounding area. Llandudno is the largest of all the Welsh holiday resorts and whilst it still remains a peaceful and dignified atmosphere, it boasts all the amenities you will ever need. Llandudno is within short distance to many other attractions North Wales has to offer so you will never be short of things to do.



### Kensington Hotel

[www.kensingtonhotel.wales](http://www.kensingtonhotel.wales)

The Kensington Hotel in Llandudno is a classically styled Victorian seafront hotel, predominantly positioned on the central promenade with spectacular views of the Great Orme and Llandudno Bay. Conveniently located for all local attractions, restaurants, bars and an excellent base to explore.

#### What's Included:

- Return Coach Travel
- Traditional Cooked Breakfast
- Three Course Evening Meal

#### Tour Includes:

Snowdonia Tour • Mystery Tour

#### Facilities Include

En suite TV Bar/Lounge !Free Wi-Fi

"Tea/coffee making facilities #Lift accessto mostfloors

Departure	Dates	Price
Mon - Fri	1st - 5th April	£320
Mon - Fri	10th - 14th June	£355
Mon - Fri	11th - 15th November - Turkey & Tinsel	£349



# Scarborough



Set in Yorkshire's glorious coastline, Scarborough is a popular and colourful resort. Set on the edge of the rugged North Yorkshire Moors the area boasts a beautiful harbour, Sealife Marine Sanctuary, sandy beaches, North Bay railway, Scarborough Castle, Flamingo Land and much more. There are plenty of shops and restaurants all within close proximity of the beach. A lovely destination to suit all ages.

## New Hotel 2024



### Boston Hotel

[www.boston.scarborough-hotels.co.uk](http://www.boston.scarborough-hotels.co.uk)

Finding an ideal charming hotel in Scarborough does not have to be difficult. Welcome to Boston Hotel, a nice option for travellers like you. Given the close proximity of popular landmarks, such as Freddie Gilroy and the Belsen Stragglers, guests of Boston Hotel can easily experience some of Scarborough's most well known attractions.

#### What's Included:

- Return Coach Travel
- Traditional Cooked Breakfast
- Three Course Evening Meal

#### Tour Includes:

Bridlington • Whitby

#### Facilities Include

En suite TV Bar/Lounge !Free Wi-Fi  
"Lift accessto mostfloors #Tea/coffee makingfacilities

Departure	Dates	Price
Mon - Fri	8th - 12th April	£260
Mon - Fri	19th - 23rd August	£299
Mon - Fri	21st - 25th October	£289



### The Cumberland Hotel

[www.cumberland-hotel.scarborough.top-hotels-uk.com](http://www.cumberland-hotel.scarborough.top-hotels-uk.com)

Extremely well situated on the South Cliff a few minutes walk from the Spa complex, beach and town centre. The hotel has some splendid views of the resort and includes all the amenities to make sure you are comfortable during your visit.

#### What's Included:

- Return Coach Travel
- Traditional Cooked Breakfast
- Three Course Evening Meal
- Evening Entertainment - see hotel for further information

#### Tour Includes:

Bridlington • Whitby

#### Facilities Include

En suite TV Bar/Lounge !Free Wi-Fi  
#Tea/coffee makingfacilities

"Lift accessto mostfloors(somesteps to rooms)

**Please note: There is a single room supplement at this hotel.**

Departure	Dates	Price
Mon - Fri	25th - 29th March	£275

Tel: **0115 926 3138**

Mobile: **07814 768783**



## WARNERLEISUREHOTELS



### Breakfast & Dinner

Magnificent breakfasts and three-course dinners featuring the classics, with either help yourself from the buffet or waiter service.



### Relaxing essential

The pools are open all day for dips and water aerobics and there are saunas and bubble pools as well as yoga, cinemas and games rooms.



### Selection of sports

From dance and fitness classes to archery, rifle shooting, Nordic walking, bike rides and gardener-led tours in heritage grounds.



### Room treats

A generous tea tray, topped up daily, with coffee, tea and delicious hot chocolate.



### Live music & shows

No need for car keys or taxis. After dinner, it's showtime with musicals, bands, DJs, comedy and visiting artists in theatres, just for guests.



### Exclusively for adults

A collection of manors, castles and seaside escapes totally tailored to adults



## Bodelwyddan Castle



Bodelwyddan (pronounced bod-el-with-an), is a Grade II listed Victorian building near the North Wales coast, not far from Snowdonia. Set within the grounds of a romantic castle, but with all the amenities of a modern Hotel, including a superb range of leisure facilities, numerous daily activities, and nightly live entertainment.



### What's Included:

- Return Coach Travel • Traditional Cooked Breakfast
- Three Course Evening Meal
- Evening Entertainment - see hotel for further information

### Tour Includes:

Llandudno • Mystery Tour

### Facilities Include

Ensuite TV Bar/Lounge !FreeWi-Fi  
 "Lift accessto mostfloors #Tea/coffee makingfacilities  
 \$Heated SwimmingPool

### Departure

Mon - Fri

### Dates

22nd - 26th April

### Price

£405

## Lakeside Holiday Village



The Lakeside Coastal Village is situated by the sea on Hayling Island which makes for a great seaside break. The accommodation is a chalet style which is beautifully decorated to a very high standard with everything to make your stay comfortable.



### What's Included:

- Return Coach Travel • Traditional Cooked Breakfast
- Three Course Evening Meal
- Evening Entertainment - see hotel for further information

### Tour Includes:

Chichester/Bognor • Portsmouth

### Facilities Include

Ensuite TV Bar/Lounge ! FreeWi-Fi  
 " Lift access to most floors # Tea/coffee makingfacilities  
 \$ Heated SwimmingPool

### Departure

Mon - Fri

### Dates

6th - 10th May

### Price

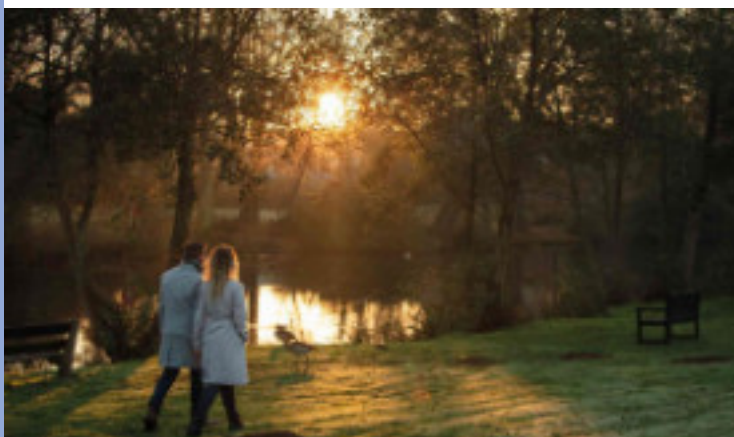
£369



## Gunton Hall Village



Gunton Hall has a distinctive rural feel, it may be within walking distance to the beach, but is surrounded by Suffolk woodland, gardens and a picturesque lake. Accommodation is a chalet type with all facilities to make your stay memorable.



### What's Included:

- Return Coach Travel
- Traditional Cooked Breakfast
- Three Course Evening Meal
- Evening Entertainment - see hotel for further information

### Tour Includes:

Norwich • Great Yarmouth

### Facilities Include

Ensuite TV Bar/Lounge !FreeWi-Fi  
 "Lift access to most floors #Tea/coffee making facilities  
 \$Heated Swimming Pool

### Departure

Mon - Fri

### Dates

15th - 19th July

### Price

£389

## Norton Grange



Norton Grange on the Isle of Wight is a chalet village overlooking the Solent. Everything you need is here to make your stay a memorable one. The accommodation is to a very high standard and comes complete with everything to make your stay comfortable.



### What's Included:

- Return Coach Travel
- Traditional Cooked Breakfast
- Three Course Evening Meal
- Evening Entertainment - see hotel for further information

### Tour Includes:

Ryde/Newport • Shanklin/Alum Bay

### Facilities Include

Ensuite TV Bar/Lounge ! FreeWi-Fi  
 " Lift access to most floors # Tea/coffee making facilities  
 \$ Heated Swimming Pool

### Departure

Mon - Fri

### Dates

23rd - 27th September

### Price

£340



## Corton Holiday Village



Corton Coastal Village, is close to the Norfolk Broads and the Sunshine Coast near Lowestoft. The area is famous for the glorious beaches which are lovely and sandy with the odd one or two bright beach huts gracing the shore line. The holiday village is built on a chalet theme, the rooms have clapboard design with fresh pastel interiors.



### What's Included:

- Return Coach Travel
- Traditional Cooked Breakfast
- Three Course Evening Meal
- Evening Entertainment - see hotel for further information

### Tour Includes:

Southwold/Lowestoft • Great Yarmouth

### Facilities Include

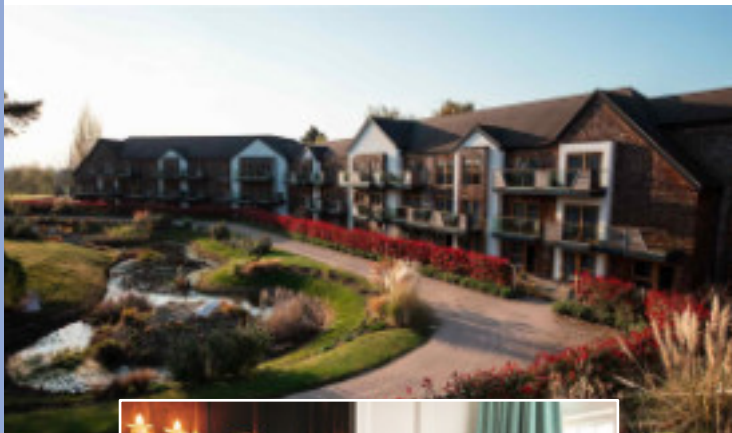
Ensuite TV Bar/Lounge !FreeWi-Fi  
"Lift access to most floors #Tea/coffee making facilities  
\$Heated Swimming Pool

Departure	Dates	Price
Mon - Fri	29th January - 2nd February	£239
Mon - Fri	2nd - 6th December - Turkey & Tinsel	£320

## Alvaston Hall



With thousands of years of history dating back to when it was the home of a Saxon farmer named Aelfgar, this Grade II-listed country house is packed with charm. Just a five-minute drive from the riverside town of Nantwich, Alvaston Hall makes a great base for exploring Cheshire's vibrant greenery and stunning architecture.



### What's Included:

- Return Coach Travel
- Traditional Cooked Breakfast
- Three Course Evening Meal
- Evening Entertainment - see hotel for further information

### Tour Includes:

Chester • Mystery Tour

### Facilities Include

Ensuite TV Bar/Lounge ! FreeWi-Fi  
" Lift access to most floors # Tea/coffee making facilities  
\$ Heated Swimming Pool

Departure	Dates	Price
Mon - Fri	22nd - 26th January	£299

## Falmouth



Beaches, castles, museums, galleries, parks, boat trips, rock pooling and ice creams and that's just the first day of your holiday in Falmouth! Falmouth is a fun base for all the family, with many of Cornwall's top attractions right on the doorstep. There are some terrific family friendly beaches in Falmouth or if you prefer there are some perfect places for a stroll or picnic.



### Membley Hall Hotel

[www.membleyhallhotel.co.uk](http://www.membleyhallhotel.co.uk)

Membley Hall Hotel is situated in one of the most picturesque regions of Cornwall which occupies a sea front position with splendid views of Falmouth Bay and the majestic Cornish coastline. The hotel prides itself on making all guests comfortable with all amenities available.

#### What's Included:

- Return Coach Travel
- Traditional Cooked Breakfast
- Three Course Evening Meal
- Evening Entertainment - see hotel for further information

#### Tour Includes:

Newquay • St Ives • Porthleven/Truro

#### Facilities Include

En suite TV Bar/Lounge !Spa Pool/Sauna  
"Tea/coffee making facilities #Lift accessto mostfloors  
\$Bowling Green,Pool Table& Table Tennis %Free Wi-Fi

Departure	Dates	Price
Sun - Sat	16th - 22nd June	£560

## Eastbourne



Eastbourne is set in the heart of the South Coast which is sheltered by Beachy Head and the South Downs and boasts of being one of the top sunshine resorts in the UK. The five mile promenade along with the famous Carpet Gardens line the seafront of Eastbourne. With a beautiful coastline and an array of lovely shops, Eastbourne will suit all ages.

### New Hotel 2024

#### Haddon Hall Hotel

[www.haddonhallhotel.co.uk](http://www.haddonhallhotel.co.uk)

Enviably situated at the seafront end of Devonshire Place, a broad tree lined avenue which links the main promenade with the town centre, so you are centrally situated to make the most of your stay in Eastbourne. The Bandstand is located across the road from the hotel and the Victorian Pier is a short stroll along the level promenade.



#### What's Included:

- Return Coach Travel
- Traditional Cooked Breakfast
- Three Course Evening Meal
- Evening Entertainment - see hotel for further information

#### Tour Includes:

Battle/Hastings • Worthing • Mystery Tour (August only)

#### Facilities Include

En suite TV Bar/Lounge %Free Wi-Fi  
"Tea/coffee making facilities #Lift accessto mostfloor

Departure	Dates	Price
Sun - Thurs	24th - 28th March	£249
Sat - Fri	15th - 21st June	£449
Sat - Sat	31st August - 7th September	£520



## Whitby



Whitby is set along the stunning Yorkshire coast with easy access to the rolling North York Moors which offers up a delectable selection of historic villages and picturesque scenery. Explore the monastic ruins of Whitby Abbey which sit on the East Cliff headland, enjoy a steam train journey through the North York Moors National Park or spend a day on West Cliff beach surrounded by vibrant beach huts.



### Royal Hotel

[www.bespokehotels.com/royal-whitby](http://www.bespokehotels.com/royal-whitby)

If you're looking for hotels in Whitby, the Royal Whitby is one of the jewels in the Coast & Country Hotel Collection crown. From a stunning cliff top location, our guests enjoy the most amazing views on all sides – of the beaches, harbour, old town, abbey ruins and headland.

#### What's Included:

- Return Coach Travel
- Traditional Cooked Breakfast
- Three Course Evening Meal

#### Tour Includes:

Pickering/Thornton Le Dale • Mystery Tour

#### Facilities Include

En suite TV Bar/Lounge !Free Wi-Fi  
"Lift accessto mostfloors #Tea/coffee makingfacilities  
**Please note: There is a single room supplement at this hotel.**

Departure	Dates	Price
Mon - Fri	18th - 22nd March	£260
Mon - Fri	7th - 11th October	£339

## Cromer



Cromer is a firm favourite with families and is a typically traditional seaside resort. Perched on the very edge of the North Norfolk coast with wide open beaches and the famous tasty crabs the area has plenty to offer. Cromer has an array of shops, cafes and restaurants but also includes the more traditional bucket and spade and seaside gift shops.



### Hotel De Paris

[www.leisureplex.co.uk/hotel-de-paris](http://www.leisureplex.co.uk/hotel-de-paris)

The Hotel de Paris is a delightful grade 2 listed building set in the finest position in Cromer. All shops and local amenities are close by and the hotel overlooks the beach and pier.

#### What's Included:

- Return Coach Travel
- Traditional Cooked Breakfast
- Three Course Evening Meal
- Evening Entertainment - see hotel for further information

#### Tour Includes:

Norwich • Mystery Tour

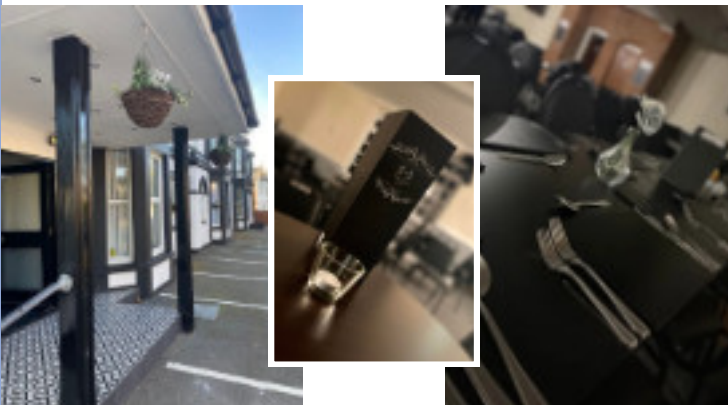
#### Facilities Include

En suite TV Bar/Lounge !Free Wi-Fi  
#Tea/coffee makingfacilities "Lift accessto mostfloors

Departure	Dates	Price
Mon - Fri	5th - 9th February	£240



The island continues to be as popular as ever with something to suit all ages. The Isle of Wight offers all visitors a delightful combination of coastal and country scenery with old world villages and the more up to date seaside resorts. Shanklin is the most charming of traditional seaside resorts with beautiful beaches set within a backdrop of sandstone cliffs.



## Burlington Hotel

[www.burlingtonhotelsandown.co.uk](http://www.burlingtonhotelsandown.co.uk)

The newly refurbished Burlington Hotel boasts 70 ensuite rooms, with superior accommodation available. The hotel sits in a prime central seaside location in Sandown, Isle of Wight, within two minutes walking distance to the beach and town centre. Sandown seafront provides the perfect day at the beach for all, whether you are looking to relax, play crazy golf or fancy a spot of sailing, there is activities catered to all age groups.

### What's Included:

- Return Coach Travel
- Traditional Cooked Breakfast
- Three Course Evening Meal
- Evening Entertainment - see hotel for further information

### Tour Includes:

Island Tour/East Wight/Ryde

### Facilities Include

En suite TV Bar/Lounge!Free Wi-Fi  
"Tea/coffee makingfacilities

Departure	Dates	Price
Mon - Fri	1st - 5th April	£265
Mon - Fri	22nd - 26th July	£299



## Channel View Hotel

[www.channelviewhotel.co.uk](http://www.channelviewhotel.co.uk)

Boasting the most amazing and picturesque views of the English Channel, The Channel View Hotel is sat a top the cliffs of Shanklin Bay in an idyllic location. The Hotel is within close proximity of the beaches, which stretch from Luccombe Bay all the way to Yaverland. Perfect for a day of coastal relaxation.

### What's Included:

- Return Coach Travel
- Traditional Cooked Breakfast
- Three Course Evening Meal
- Evening Entertainment - see hotel for further information

### Tour Includes:

Osborne House (Admission not inc.) • Mystery Tour • Ryde

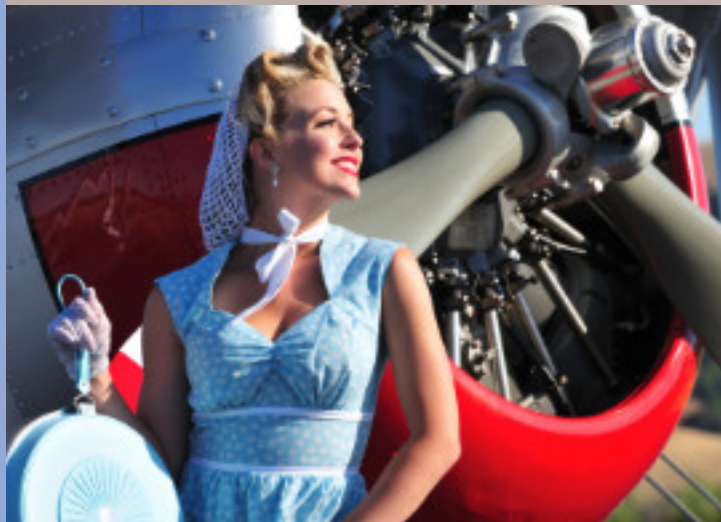
### Facilities Include

En suite TV Bar/Lounge!Free Wi-Fi  
"Tea/coffee makingfacilities #Lift accessto mostflo  
\$Outdoor HeatedSwimmingPool& Spa

Departure	Dates	Price
Mon - Fri	12th - 16th August	£425



## Lytham St Annes



Forest Travel Holidays present this special tour taking in all the nostalgia of the 1940's. All guests are issued with a ration book upon arrival to the hotel. Themed music, menus, uniforms and props create a real 1940's feel within the Hotel. So why not join in the fun and let us take you back in time!



### Clifton Park Hotel

[www.cliftonpark.co.uk](http://www.cliftonpark.co.uk)

Clifton Park Hotel is renowned for its timeless elegance, superior quality and exemplary service. Centrally located in the stylish seaside town of St Annes-on-Sea, only 1 mile from leafy Lytham and 3 miles from bustling Blackpool.

#### What's Included:

- Return Coach Travel
- Traditional Cooked Breakfast
- Three Course Evening Meal
- Evening Entertainment - see hotel for further information

#### Tour Includes:

Southport • Fleetwood/Cleveleys

#### Facilities Include

Ensuite TV Bar/Lounge !FreeWi-Fi  
"Heated SwimmingPool#Lift accessto mostfloors  
\$Tea/coffee makingfacilities

Departure	Dates	Price
Mon - Fri	15th - 19th July	£410

## Exmouth



Being surrounded by sea, Exmouth has miles of beautiful coastal walks and soft sandy beaches making this destination suitable for families. The beaches are excellent for families to swim and play or just to relax, this has been a popular seaside resort since the 18th century and is a healthy thriving town that is proud to be a holiday destination with plenty of things to do.



### Ashton Court Hotel

[www.ashtoncourthotel.co.uk](http://www.ashtoncourthotel.co.uk)

The Hotel enjoys magnificent views of the Exe estuary and the beautiful coastline stretching out towards Torbay. All the pleasures of the Seafront are just a short stroll away, with the amenities of the town within easy walking distance. We are fortunate to have the Land Train stop outside the hotel everyhour throughout the day.

#### What's Included:

- Return Coach Travel
- Traditional Cooked Breakfast
- Three Course Evening Meal
- Evening Entertainment - see hotel for further information

#### Tour Includes:

Bicton Park (inc. Afternoon Tea & Admission) • Sidmouth

#### Facilities Include

Ensuite TV Bar/Lounge ! FreeWi-Fi  
# Lift access to most floors \$ Tea/coffee makingfacilities

Departure	Dates	Price
Mon - Fri	11th - 15th March	£369
Mon - Fri	1st - 5th July	£399
Mon - Fri	28th October - 1st November	£399

## Torquay



Torquay is South Devon's most stylish resort and has a Mediterranean atmosphere with a palm tree lined promenade. The harbour holds some spectacular boats which you will see why the area gets its reputation as a millionaires paradise. There is a bustling town for all those who like to do a bit of shopping with galleries, cafes and restaurants.



### Riviera Hotel

[www.rivieratorquay.co.uk](http://www.rivieratorquay.co.uk)

A warm welcome awaits you at the Riviera Hotel in the heart of Torquay on the English Riviera. The hotel is just a stones throw away from Torquay's award winning beaches, sparkling blue sea and all that the English Riviera and surrounding area has to offer.

#### What's Included:

- Return Coach Travel
- Traditional Cooked Breakfast
- Three Course Evening Meal
- Evening Entertainment - see hotel for further information

#### Tour Includes:

Plymouth • Brixham/Newton Abbot

#### Facilities Include

Ensuite (walk-in shower) TV Bar/Lounge

!Tea/coffee making facilities "Lift access to most floors

#Heated Indoor Swimming Pool \$Free Wi-Fi

**Please note: There is a single room supplement at this hotel.**

Departure	Dates	Price
Mon - Fri	19th - 23rd February - 2 for 1 Bar	£220
Mon - Fri	1st - 5th July	£329
Mon - Fri	25th - 29th November - Turkey & Tinsel	£249

## Newcastle



Newcastle, located on the River Tyne's northern bank the area is buzzing with plenty of cosmopolitan bars, restaurants and public spaces. The main attractions include the famous Tyne Bridge, Discovery Museum and of course the St. James Park Football Stadium to name but a few.

### New Hotel 2024



### Copthorne Hotel

[www.millenniumhotels.com/copthorne-hotel-newcastle](http://www.millenniumhotels.com/copthorne-hotel-newcastle)

Located in Newcastle Quayside right in the heart of this vibrant city, Copthorne Hotel Newcastle is the perfect base from which to explore. As the only hotel in Newcastle city with majority of its 156 hotel rooms overlooking the River Tyne, there's nowhere better in the city to stay with a Quayside view.

#### What's Included:

- Return Coach Travel
- Traditional Cooked Breakfast
- Three Course Evening Meal

#### Tour Includes:

Holy Island/Seahouses • Hexham/Hadrian's Wall

#### Facilities Include

Ensuite TV Bar/Lounge \$Free Wi-Fi

!Tea/coffee making facilities "Lift access to most floors

**Please note: There is a single room supplement at this hotel.**

Departure	Dates	Price
Mon - Fri	8th - 12th April	£330



## Mold



Mold is a beautiful Welsh town situated in the heart of Flintshire. The town is both popular with locals and tourists alike with little cafes and quaint shops and a market every Wednesday selling all local produce from cheeses, artisan breads and such like. Surrounded typically by beautiful Welsh countryside and Country parks this outstanding area has much to offer.



### Beaufort Park Hotel

[www.beaufortparkhotel.co.uk](http://www.beaufortparkhotel.co.uk)

The Beaufort Park Hotel is an independently run hotel just a short drive from the historic town of Mold. Situated in the North East of Wales with plenty of attractions nearby including the scenic Snowdonia National Park and historic castles. The hotel will make you feel right at home with comfort in mind so why not put up your feet and enjoy the relaxed family atmosphere.

#### What's Included:

- Return Coach Travel
- Traditional Cooked Breakfast
- Three Course Evening Meal

#### Tour Includes:

Horseshoe Pass/Llangollen/Wrexham • Llandudno • Chester

#### Facilities Include

En suite TV Bar/Lounge!Free Wi-Fi  
"Tea/coffee makingfacilities

Departure	Dates	Price
Mon - Fri	5th - 9th August	£320

## Great Yarmouth



Great Yarmouth has a host of holiday attractions for both the day and evening including a theatre and an array of shops. There are miles of sandy beaches backed by the Marine Parade where you can put your hand to tennis, bowls, putting and angling. The area hosts a theme park to keep the little ones entertained along with all the traditional seaside shops which makes this destination ideal for families.



### The Waverley Hotel

[www.thewaverleyhotelgy.co.uk](http://www.thewaverleyhotelgy.co.uk)

The Waverley Hotel is in one of the best located hotels in Great Yarmouth just a few minutes from the beach and all the local attractions. The hotel has recently been fully renovated with a chic modern decor and include all the amenities to make your stay comfortable.

#### What's Included:

- Return Coach Travel
- TradiConal Cooked Breakfast
- Three Course Evening Meal

#### Tour Includes:

Norwich • Mystery Tour

#### Facilities Include

En suite TV Bar/Lounge!Free Wi-Fi  
"Tea/coffee makingfacilities #Lift accessto mostfloors

Departure	Dates	Price
Mon - Fri	29th Jan - 2nd Feb - 99p bar deal	£179
Mon - Fri	15th - 19th April	£259

## Blackpool



Blackpool is one of Britain's favourite seaside resorts of the North West! The famous Blackpool tower will give you a trip down memory lane from 380 feet above the promenade to down to the depths of the Tower Dungeon. Blackpool zoo, donkey rides, Pleasure Beach and Sandcastle Waterpark are among many attractions this resort has to offer so you will never be short of things to keep you entertained!



### The Park House Hotel

[www.parkhousehotelblackpool.com](http://www.parkhousehotelblackpool.com)

A family run hotel positioned in the prestigious Blackpool North Promenade and within walking distance to all the major attractions. The hotel has a superb entertainment's package most nights or alternatively if you prefer something a little quieter, there is a sun lounge which has stunning views overlooking the Irish Sea.

#### What's Included:

- Return Coach Travel • Traditional Cooked Breakfast
- Three Course Evening Meal
- Evening Entertainment - see hotel for further information

#### Tour Includes:

Fleetwood/Cleveleys • Southport • Illumination Tour

#### Facilities Include

En suite (walk-in shower) TV Free Wi-Fi  
!Lift accessto mostfloors "Tea/coffee makingfacilities  
#Bar/Lounge \$Heated IndoorSwimmingPool

Departure	Dates	Price
Mon - Fri	14th - 18th October	£359

## Buckinghamshire



Beautiful Buckinghamshire....surrounded by some stunning scenery with fabulous restaurants, pubs and cafes there is something for everyone who visits this delightful area. Open countryside and natural features, including the Chiltern Hills Area of Outstanding Natural Beauty, Stowe Landscaped Gardens near Buckingham, and the River Thames these chocolate box villages are truly breathtaking!

### New Hotel 2024



### The Bull Hotel

[www.sarova-bullhotel.com](http://www.sarova-bullhotel.com)

A peaceful 4-star hotel in Gerrards Cross, Buckinghamshire, with free UK calls, WiFi, full English breakfast, landscaped gardens and an award-winning restaurant and bar. Opened in 1688 as a coaching inn, the picturesque hotel combines warm British hospitality with modern comforts.

#### What's Included:

- Return Coach Travel • Traditional Cooked Breakfast
- Three Course Evening Meal

#### Tour Includes:

Windsor/2 hour cruise on the Thames • RHS Garden Wisley  
• Mystery Tour

#### Facilities Include

En suite TV #Bar/Lounge Free Wi-Fi  
"Tea/coffee makingfacilities!Lift accessto mostfloors  
**Please note: There is a single room supplement at this hotel.**

Departure	Dates	Price
Mon - Fri	29th July - 2nd August	£489



## Bournemouth



Many now refer to Bournemouth as London by the sea, situated on the South coast of England and one of the United Kingdoms warmest climates, this town truly is a dream location. The towns vibrant centre, award winning gardens and bustling pier are all directly above the miles of Blue Flag golden sandy beaches and stylish promenades.

### New Hotel 2024



### Marsham Court Hotel

[www.marshamcourthotel.co.uk](http://www.marshamcourthotel.co.uk)

Offering high-quality accommodation in a wonderful location edging the beautiful Dorset coastline and sparkling sea in Bournemouth. The renovated Marsham Court Hotel is a relaxing full-service 4 star hotel, ideally located for your Bournemouth Holiday.

#### What's Included:

- Return Coach Travel
- Traditional Cooked Breakfast
- Three Course Evening Meal
- Evening Entertainment - see hotel for further information

#### Tour Includes:

Weymouth • Salisbury

#### Facilities Include

Ensuite TV Bar/Lounge !FreeWi-Fi  
"Lift accessto mostfloors #Tea/coffee makingfacilities  
\$Heated SwimmingPool

Departure	Dates	Price
Mon - Fri	22nd - 26th July	£449

## Paignton



Nestling between its two neighbours, Torquay and Brixham, Paignton is a pleasant family resort noted for its mild climate. The resort which is on the English Riviera is a popular tourist town that is popular with both young and old alike. Paignton is home to an array of fantastic beaches where you can dip your toes in the award winning safe clean Blue Flag beaches.



### Queens Hotel

[www.queenspaignton.com](http://www.queenspaignton.com)

The Queens Hotel is a family run establishment which is on a flat level position just 200 yards from Paignton town centre and seafront. The friendly staff are on hand to take care of your every need and want your stay to be a relaxing, refreshing and rejuvenating one.

#### What's Included:

- Return Coach Travel
- Traditional Cooked Breakfast
- Three Course Evening Meal
- Evening Entertainment - see hotel for further information

#### Tour Includes:

Teignmouth/Dawlish • Buckfast Abbey/Totnes

#### Facilities Include

Ensuite TV Bar/Lounge ! FreeWi-Fi  
" Lift access to most floors # Tea/coffee making facilities  
\$ Heated Swimming Pool

Departure	Dates	Price
Mon - Fri	11th - 15th March - Cosy Break	£289
Mon - Fri	27th - 31st May	£329
Mon - Fri	8th - 12th July	£369
Mon - Fri	2nd - 6th December - Turkey & Tinsel	£300

## Morecambe



Set on Lancashire's West Coast, the pleasant resort of Morecambe is ideally situated for a relaxing break and for exploring the Lake District. Morecambe's location is outstanding with stunning views across the bay. You will find five miles of level promenade with a vibrant modern resort but with all the traditional hospitality that you thought had disappeared forever.



### Auckland Hotel

[www.aucklandhotel.co.uk](http://www.aucklandhotel.co.uk)

The Auckland Hotel has been a family run hotel for nearly 40 years and understand the needs of holiday makers in Morecambe. From great food to a good night's sleep they strive to make sure your stay as perfect as possible. Located in the heart of Morecambe and close to shops and restaurants the Auckland Hotel is the place to stay.

#### What's Included:

- Return Coach Travel
- Traditional Cooked Breakfast
- Three Course Evening Meal
- Evening Entertainment - see hotel for further information

#### Tour Includes:

Kirkby Lonsdale/Lancaster • Lake Windermere/Kendal

#### Facilities Include

En suite TV Bar/Lounge!Free Wi-Fi  
"Tea/coffee makingfacilities #Lift accessto mostfloors  
\$Spa (massage,beautytherapy& manicures- chargesapply)  
%Outdoor HeatedSwimmingPool

Departure	Dates	Price
Mon - Fri	4th - 8th March	£299
Mon - Fri	8th - 12th July	£349
Mon - Fri	30th September - 4th October	£339

## Bideford



Bideford a little gem in North Devon. A market town known as one of the busiest ports in England during the 16-17 century. Although Bideford is steeped in history it still has all the modern amenities including shops and restaurants. There are a fantastic range of attractions to keep you entertained which will cater for all ages.



### Durrant House Hotel

[www.durranthousehotel.com](http://www.durranthousehotel.com)

Durrant House Hotel has views across the North Devon's Taw Estuary towards Instow beach. Beautifully decorated rooms have everything you'll need to relax along with a spa with heated outdoor swimming pool.

#### What's Included:

- Return Coach Travel
- Traditional Cooked Breakfast
- Three Course Evening Meal
- Evening Entertainment - see hotel for further information

#### Tour Includes:

Bude • Barnstaple/Ilfracombe

#### Facilities Include

En suite TV Bar/Lounge!Free Wi-Fi  
"Tea/coffee makingfacilities #Lift accessto mostfloors  
\$Spa (massage,beautytherapy& manicures- chargesapply)  
%Outdoor HeatedSwimmingPool

Departure	Dates	Price
Mon - Fri	12th - 16th February - Cosy Break	£280
Mon - Fri	12th - 16th August	£349
Mon - Fri	25th - 29th November - Turkey & Tinsel	£299





Tiverton is the largest town in mid Devon and has a small but busy shopping centre. The parish church dedicated to St Peter dates from the 15th century and reflects the prosperity brought to the town by the wool trade. Tiverton's historic Pannier Market is 50 yards away, the castle is at the end of the road, and the Great Western Canal starts at Tiverton Basin with horse drawn canal trips and day boats for hire to explore its quiet and leafy extents. There are fine carvings of anchors, waves and ships of all types and even Barbary apes. The town has some well preserved old merchant's houses. Blundell's School was founded by back in 1640 by a local merchant and converted to dwelling houses in 1880.

## New Hotel 2024



### Tiverton Hotel Lounge & Venue

[www.tivertonhotel.co.uk](http://www.tivertonhotel.co.uk)

Set in 2 acres on the edge of the market town of Tiverton in the heart of beautiful Mid Devon, the Tiverton Hotel Lounge & Venue have 69 rooms all decorated to a high standard and include all the amenities to make your stay comfortable.



#### What's Included:

- Return Coach Travel
- TradiConal Cooked Breakfast
- Three Course Evening Meal

#### Tour Includes:

- Horse Drawn Barge Trip on the Tiverton Canal
- Single journey on the West Somerset Railway - Bishops Lydeard to Minehead
- Mystery tour

#### Facilities Include

Ensuite TV Bar/Lounge !FreeWi-Fi  
"Tea/coffee makingfacilities #Lift accessto mostfloors  
**Please note: There is a single room supplement at this hotel.**



#### Departure

Mon - Fri

#### Dates

10th - 14th June

#### Price

£499



# Mystery Tour

All part of the fun of not knowing where we will be heading but with a great group of like minded travellers we can set off and see where we all end up! So why not give it a try as we are sure you won't be disappointed!

#### What's Included:

- Return Coach Travel
- Traditional Cooked Breakfast
- Three Course Evening Meal

#### Facilities Include

En suite      TV      Bar/Lounge !Free      Wi-Fi  
"Tea/coffee      making facilities      #Lift      accessto mostfloors

Departure	Dates	Price
Mon - Fri	28th October - 1st November	£260

# THURSFORD

TRULY UNIQUE

# Christmas Spectacular

Dates to be confirmed







# Christmas & New Year PACKAGES

Christmas Spectacular  
The Kensington Hotel

23rd - 27th December

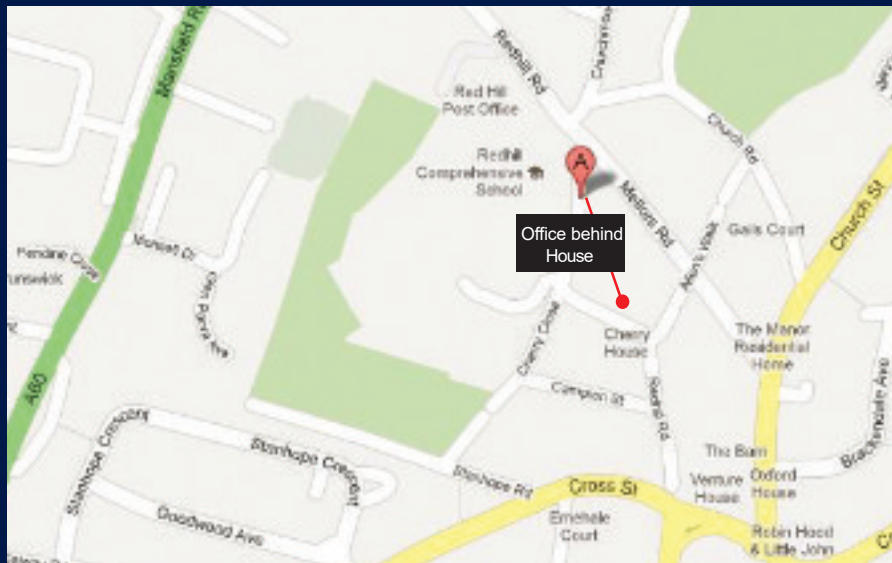


New Year Extravaganza  
The Royal Grosvenor Hotel

30th December - 2nd January



# FOREST TRAVEL HOLIDAYS



Forest Travel Holidays

30 Redhill Road Arnold Nottingham NG5 8GW

t: 0115 926 3138 m: 07814 768783